



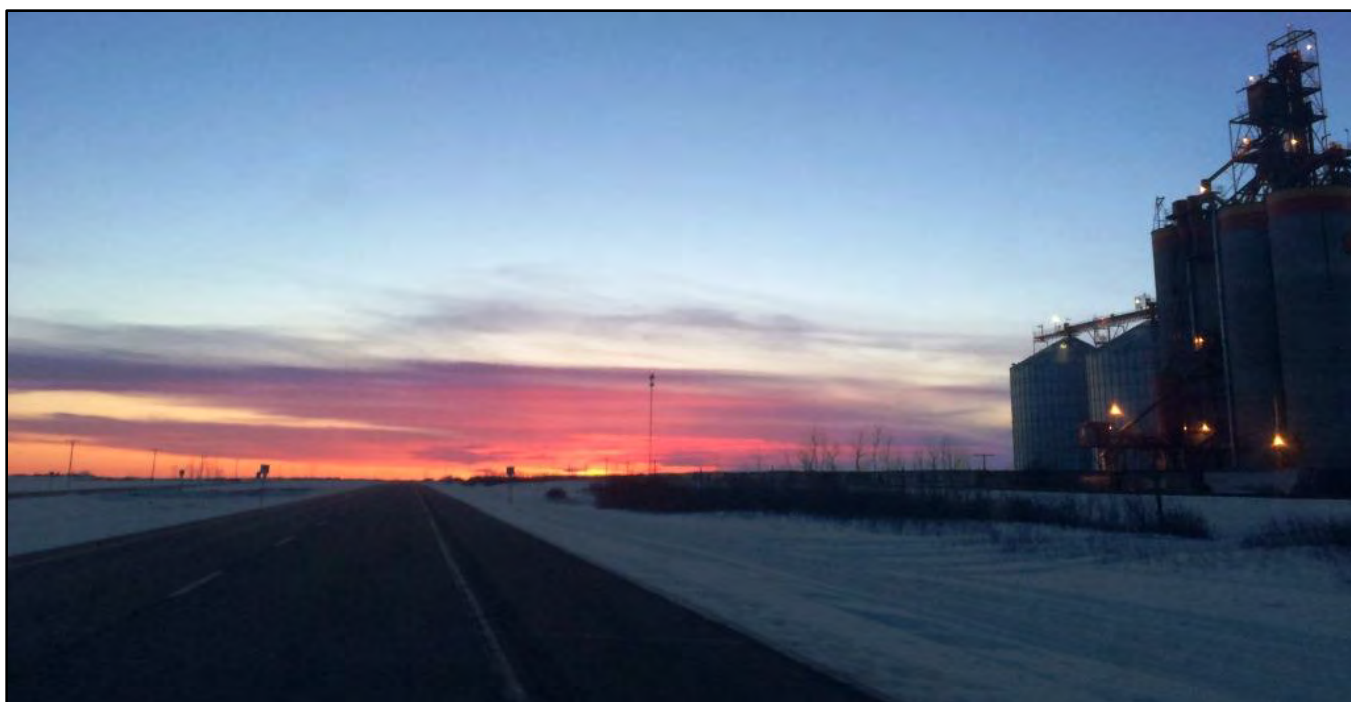
Provincial Court of Saskatchewan

Biennial Report



The Provincial Court of Saskatchewan

**January 1, 2014 to
December 31, 2015**



Provincial Court of Saskatchewan Biennial Report

January 1, 2014 - December 31, 2015

Table of Contents

Message from Chief Judge

1. Introduction

Structure of the Court

Chief Judge

Associate Chief Judge

Administrative Judges

Puisne Judges

Temporary Judges

Justices of the Peace

2. The Judiciary

Judicial Appointments

Composition of the Court

Judicial Independence

Security of Tenure

Financial Security

Institutional Independence

Judicial Compensation

Judicial Accountability

Judicial Education

Public Education

3. Jurisdiction

Civil Division – Small Claims

Adult Criminal

Youth Criminal Justice

Family Law

Traffic and Municipal

4. Therapeutic Courts

- Aboriginal and Cree Courts

- Domestic Violence Courts

- Mental Health Courts

- Drug Treatment Courts

 - A Day at Drug Treatment Court*

5. Court Administration

- Permanent Locations

- Circuit Points

- Court Records

- Provincial Court Locations

6. Selected Statistics

- Next Available Trial Date

- Justice Automated Information Network (JAIN)

- Video Conferencing Usage

Appendix A: Judges of the Provincial Court of Saskatchewan in the years 2014 and 2015

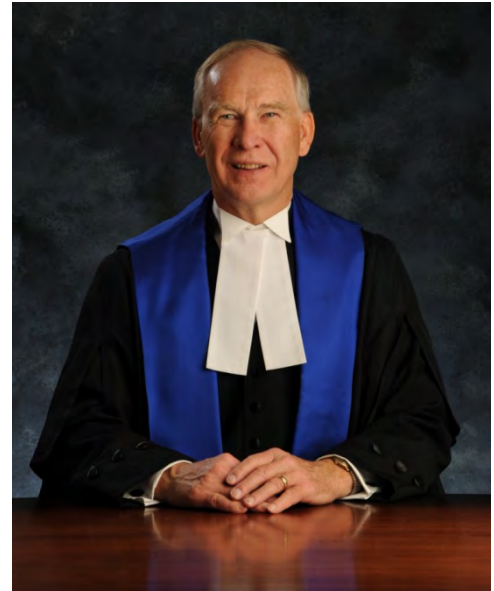
Appendix B: Court Locations

Message from the Chief Judge

My first year as Chief Judge was exceptionally interesting and busy.

I travelled to all of our Court's permanent locations and many of our circuit points, and spent time with my fellow judges from across the province. The Court looks and operates just a little differently in each location, responding to the communities in which it sits. I wanted to understand what that looked like.

Without exception, I was gratified by the professionalism that I observed, even when Court was held in community halls and other facilities that are clearly not designed as courtrooms. Coupled with the Court's broad reach across Saskatchewan, it's an approach that embodies the principles of access to justice on a daily basis.



In 2015, the Court faced a new challenge: forest fires in Northern Saskatchewan. These forced community-wide evacuations of several communities where we hold court on circuit as well as La Ronge, which is a permanent court point. The Court in La Ronge moved its files to Prince Albert, and continued as best it could, with lawyers often appearing for clients by telephone for the two weeks of the fire. Once again, I was impressed by the professionalism and commitment of our judges and court staff, as well as the dedication of so many others who work in the justice system.

The Court faces many challenges in its day-to-day operations: scheduling conflicts, transportation logistics, technology limitations, and more. Each day, judges work with court staff, counsel, and others in the system to address these challenges and carry on with court functions.

Judges are conscious of their obligation to deliver timely and effective justice in a fair and impartial manner. People who appear in our courtrooms deserve no less. This is something we all strive for and it remains a key goal for me in performing the administrative functions inherent in my role as Chief Judge.

We look forward to furthering the good work the Provincial Court does across Saskatchewan every day. I hope this report assists readers in understanding that work.

- Chief Judge James Plemel

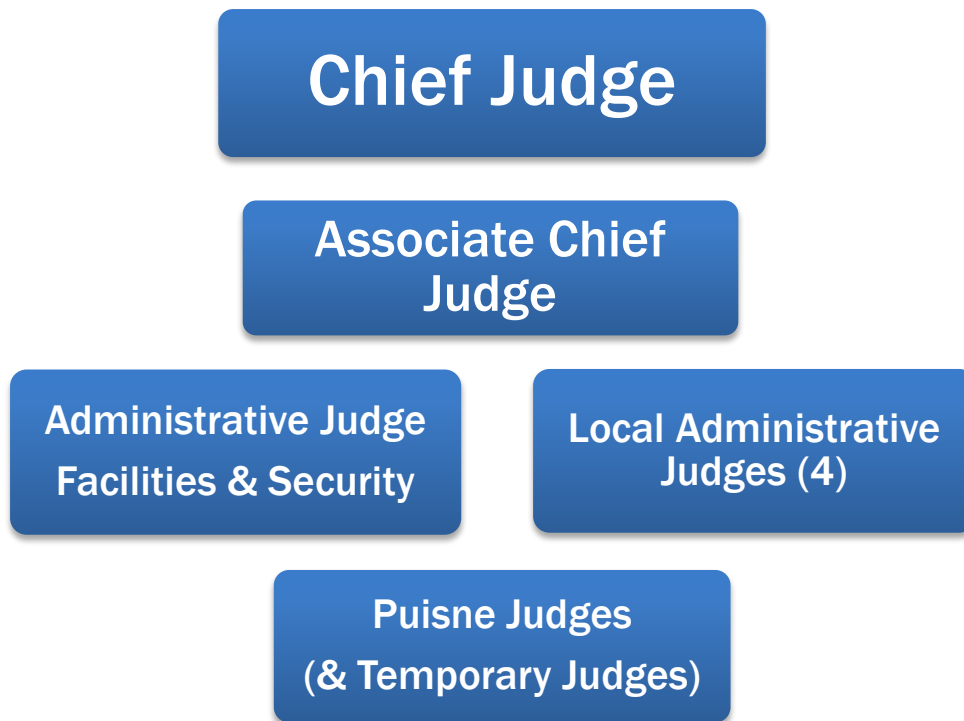
Introduction

The Provincial Court of Saskatchewan, as established by *The Provincial Court Act, 1998*, is a court of record with criminal and civil jurisdiction as defined by statute. The Court is a court of first instance for criminal matters and has limited jurisdiction in civil and family disputes.

Structure of the Court

The Provincial Court is composed of 48 judges. (This number fluctuates periodically as a result of the timing of retirements and appointments.) A Chief Judge, an Associate Chief Judge and five Administrative Judges are responsible for the administration of the Court. (Figure 1)

Figure 1: Judicial Administrative Relationships



Chief Judge

Halfway through the two-year term covered in this report, the Honourable James A. Plemel succeeded the Honourable Carol A. Snell as the Chief Judge of the Provincial Court of Saskatchewan. Chief Judge Plemel was first appointed a Provincial Court judge in October 2009, and became Chief Judge effective January 1, 2015. Judge Snell continues to sit as a regular or “puisne” judge.

The Chief Judge is appointed by the Lieutenant Governor-in-Council for a maximum term of seven years. Duties of the Chief Judge are set out in *The Provincial Court Act, 1998*, and the accompanying regulations.

These duties include:

- assigning court schedules;
- designating facilities at which the Court sits;
- assigning regular and administrative duties to judges of the Court;
- administering the human resource policies and practices of the Court;
- supervising the duties and scheduling of justices of the peace;
- delegating functions to the associate chief judge;
- appointing temporary judges; and
- overseeing transfers within the Court.

The Chief Judge works with the Ministry of Justice/Attorney General to ensure that judges have the resources and support to do their job and that court proceedings are safe and secure for all involved. As well, the Chief Judge sits as a member of the Saskatchewan Judicial Council, helping to assess applications from prospective judges and review complaints against sitting judges.

The Chief Judge represents the Court at judicial and Bar Association functions and other formal events and celebrations. In addition, the Chief Judge presides at the swearing-in ceremonies for new judges of the Provincial Court.

Associate Chief Judge

During the term of this report, the Court transitioned to a single Associate Chief Judge from the previous structure where there were two. Associate Chief Judge Murray Hinds was appointed to the position effective January 1, 2015, for a three-year term. Judge Hinds was first appointed to the Provincial Court in February 2007.

Former Associate Chief Marty Irwin retired from the Court in April 2014. Former Associate Chief Clifford Toth completed his appointed term at the end of 2014, and continues to sit as a regular or “puisne” judge.

Associate Chief Judges are appointed by the Lieutenant Governor-in-Council on the recommendation of the Chief Judge. Associate Chief Judges hold their offices only as long as the Chief Judge who recommended them for appointment continues as Chief.

Associate Chief Judges perform the duties and functions delegated to them by the Chief Judge. As well, they may be asked to fill in for the Chief Judge in the event of incapacity, absence, or vacancy. In this event, they have all of the same power and authority as the Chief Judge.

Administrative Judges

The administrative structure of the Court changed in January 2015, with the start of the new Chief Judge's term. The overall number of administrative judges was reduced to five from eight.

In 2015, there were four (previously three) administrative judges located at the larger court offices, to help organize court affairs and judicial duties at their location:

- Judge Marylynne Beaton, Regina;
- Judge Hugh Harradence, Prince Albert;
- Judge Barry Morgan, Saskatoon; and
- Judge Daniel O'Hanlon, North Battleford, for the Northwest.

The administrative judge for the Northwest was added in January 2015, and works with judges in the North Battleford, Lloydminster, and Meadow Lake offices.

As well, Judge Bruce Henning continues as administrative judge responsible for providing leadership and direction for the Court in the area of facilities and security. Several judges had previously been assigned similar administrative responsibilities in specific areas. Those assignments have been eliminated, although the Court continues to benefit from the knowledge and expertise of its many individual members.

Puisne Judges

Regular or "puisne" judges are appointed to a specific location of the Court, although travelling is a part of many judges' typical work day, given circuit point attendance and court schedule requirements.

There is at least one resident judge at every permanent court location.

Temporary Judges

The Chief Judge has the authority to appoint temporary judges when a sitting judge expects to be absent, or when, in the opinion of the Chief Judge, the Court urgently needs additional judges to carry out its work. Temporary judges have all of the same powers as a puisne judge.

Temporary judges must meet the usual requirements for appointment as a Provincial Court judge – at least 10 years as a lawyer in good standing – and must be appointed by Order in Council. Those eligible to have their names stand as a temporary judge include:

- Judges who have retired or resigned;
- Judges from another court in Saskatchewan who have retired or resigned;
- Provincial court judges from another province, including those who have retired;
- Superior court judges from another province who have retired or resigned; and
- Retired or non-practicing lawyers.

All five of the judges who retired during the two-year time period of this report have asked to have their name added to the list of temporary judges.

Justices of the Peace

In Saskatchewan, Justices of the Peace are citizens appointed by Order in Council to act as judicial officers and perform certain administrative and judicial functions in the criminal justice system. Justices of the Peace are expected to carry out these functions in a fair, impartial and independent manner.

The duties of a Justice of the Peace include:

- Administering oaths for criminal charges laid by the police or the public;
- Confirming or cancelling police-issued process (Promise to Appear, Appearance Notice, or Recognizance);
- Reviewing and signing court-issued process (Summons, Warrant for Arrest);
- Reviewing and issuing subpoenas to witnesses;
- Administering oaths for Affidavits, Affirmations, and Declarations;
- Considering applications for search warrants; and
- Releasing or remanding accused persons held in custody.

Justices of the Peace can also perform certain court functions in the absence of a judge. These are:

- Accepting guilty pleas from and sentencing persons charged with provincial regulatory offences; and
- Granting adjournments of matters.

As well, in Regina, Saskatoon, Prince Albert, Estevan, Carlyle, Assiniboia and Lloydminster, specially designated and trained Justices of the Peace conduct Traffic Court and Municipal Court.

The administration and supervision of Justices of the Peace is handled by the Supervising Justice of the Peace. Melissa Wallace was appointed to that position in July 2009 for a period of five years and reappointed in July 2014 for another five-year term.

Justices of the Peace in Saskatchewan do not have the authority to perform marriages.

The Judiciary

Judicial Appointments

Judges of the Provincial Court of Saskatchewan are appointed by the Lieutenant Governor, on the advice of the Minister of Justice. Individuals interested in becoming a judge must apply to the Saskatchewan Judicial Council. These individuals must be lawyers in good standing, and must have been lawyers for at least 10 years. In exceptional instances, the Judicial Council may recommend someone who does not meet these criteria, but has appropriate alternative legal or judicial experience.

New judges are judges from the time of their appointment and must leave their other duties behind immediately. They receive an orientation that includes training on court processes, as well as opportunities to see their judicial colleagues in action. They observe court in their assigned community, as well as in other locations. It may be two to three weeks before they've completed the training and orientation process and actually preside over court hearings.

Timely appointments help to keep the Court functioning efficiently while new judges transition into the role. The following tables list the appointments to and retirements from the Court in the calendar years 2014 and 2015.

Table 1: Provincial Court Judicial Appointments 2014 and 2015

Judge	Judicial Centre	Appointment Date
Judge J. McIvor	Meadow Lake	Feb. 13, 2014
Judge M. Martinez	Meadow Lake	Feb. 27, 2014
Judge B. Wright	Saskatoon	March 27, 2014
Judge L. Wiegiers	Estevan	March 27, 2014
Judge B. Bauer	North Battleford	July 17, 2014
Judge S. Anand	Saskatoon	Oct. 16, 2014
Judge M. Marquette	Wynyard	Dec. 18, 2014
Judge V. Monar Enweani	Saskatoon	July 23, 2015
Judge S. Schiefner	Prince Albert	Nov. 12, 2015

Table 2: Provincial Court Judicial Retirements 2014 and 2015

Judge	Judicial Centre	Appointed	Retirement Date
Judge S.C. Carter	Prince Albert	Feb. 8, 1995	April 1, 2014
Judge M.D. Irwin	Saskatoon	March 11, 1998	April 1, 2014
Judge L.A. Matsalla	Swift Current	Dec 12, 1995	April 30, 2014
Judge D.J. Kaiser	North Battleford	July 24, 1996	July 31, 2014
Judge S.P. Whelan	Saskatoon	July 24, 1996	Aug. 31, 2014

Composition of the Court

Table 3: Gender Distribution of Provincial Court Judges

	Male	%	Female	%	TOTAL
January 1, 2012	35	73	13	27	48
January 1, 2013	37	74	13	26	50
January 1, 2014	35	73	13	27	48
January 1, 2015	35	71	14	29	49
January 1, 2016	34	69	15	31	49

Table 4: Seniority of Provincial Court Judges

	Jan. 1, 2012		Jan. 1, 2013		Jan. 1, 2014		Jan. 1, 2015		Jan. 1, 2016	
Years on Bench	#	%	#	%	#	%	#	%	#	%
5 years or less	17	35	19	38	16	33	22	45	18	37
6 - 10 years	12	25	12	24	14	29	15	31	16	33
11 – 15 years	7	15	7	14	9	19	7	14	9	18
16 -20 years	7	15	8	16	6	13	1	2	2	4
20+ years	5	10	4	8	3	6	4	8	4	8

Judicial Independence

The independence of judges is necessary to maintain the integrity of our judicial system and is a cornerstone of our democracy. The principle of judicial independence allows citizens to know that, when they go to court, the judge is not influenced by the government or other forces that might taint the process.

To ensure judges are independent, three important safeguards are required. They are:

Security of Tenure

Judges are appointed by government but cannot be fired by government. This is important since the government will be a party in many of the cases that come before a judge. Judges are appointed until they retire or resign their office. Complaints about a Provincial Court Judge's conduct are handled by the Saskatchewan Judicial Council.

Financial Security

Salary and benefits for judges are set on the recommendations of independent commissions. By law, commissions are struck every three years, and 2014 was a commission year. (See *Judicial Compensation*)

Judges are not permitted to have other forms of employment income.

Institutional Independence

There are clear lines of separation between judges and the other two branches of government. The legislative branch makes the laws, but judges interpret those laws in keeping with the Constitution, case law, and precedent. While the executive branch (civil service) helps to staff court offices and administer court programs, the judges, under the leadership of the Chief Judge, are responsible for establishing the rules and processes, sitting schedules, and programs and initiatives.

Judicial Compensation

The salaries and benefits for Provincial Court Judges are established by an independent commission every three years. The commission process maintains the independence of the judiciary from other branches of government, ensuring that judges do not have to negotiate directly with the government.

Similar commissions are used across Canada to establish compensation for judges – at arm's length from government and any real or perceived political interference. It was not always like this, and indeed, the struggle for such a commission went all the way to the Supreme Court in 1997 (*PEI Reference*, or *Judges Reference*). In that decision, the highest court in Canada affirmed the need for judicial independence at all levels of court and indicated commissions had the task of making “recommendations on judges’ remuneration by reference to objective criteria, not political expediencies. The goal is to present ‘an objective and fair set of recommendations dictated by the public interest’... .”

Commissions have three members. One is appointed by the provincial government and one by the Saskatchewan Provincial Court Judges Association (SPCJA). The Chair of the commission is selected jointly by these two appointees. The commission typically holds hearings and receives submissions from interested parties, including the government and the SPCJA, but also from organizations such as the Canadian Bar Association and the Criminal Defence Lawyers Association.

The mandate of each commission is to make recommendations for judicial compensation for the upcoming three years. Since the passage of *The Provincial Court Act, 1998*, all of the commissions’ recommendations have been implemented by the government.

The 2014 commission, chaired by Doug Hodson, Q.C., handed down its recommendations in December 2014. The government subsequently implemented the recommendations.*

* The commission’s report, including submissions and responses, can be found online, on a website administered by the Ministry of Justice.

Judicial Accountability

Judges are expected to maintain high standards of personal conduct and behaviour, both in court and in public. If someone is unhappy with the conduct of a Provincial Court judge, that person can make a formal complaint to the Saskatchewan Judicial Council. However, it is important to know first that there is a difference between a judge's **conduct** and a judge's **decision**.

If someone believes the judge reached the wrong **decision** in their court case, that person may be able to appeal the decision to a higher court. Depending on the nature of the case, the appeal would be to either the Court of Queen's Bench, in the case of summary convictions, or the Court of Appeal, in the case of indictable matters. If the higher court overturns a judge's decision, it does not mean that the judge's conduct was improper.

If someone is unhappy with a Provincial Court judge's **conduct** or behaviour, that person can make a complaint to the Saskatchewan Judicial Council. The Council has the power to review and, where necessary, investigate complaints of incapacity or misconduct involving Provincial Court judges.* Where appropriate, the Council may warn, reprimand, express disapproval, suspend, or recommend to the Minister of Justice that a judge be removed from office.

Every year, the Council receives complaints that it cannot deal with. The Council cannot:

- overturn (or change) a judge's decision;
- grant appeals or new trials;
- compensate individuals;
- look into general complaints about the courts or the judicial system as a whole;
- investigate complaints about unnamed judges;
- investigate complaints about lawyers or court employees; or
- investigate complaints about federally appointed judges, that is, judges of the Court of Appeal or Court of Queen's Bench.

* The Saskatchewan Judicial Council produces an annual report that can be found online, on the Courts of Saskatchewan website.

Judicial Education

Judicial education is a priority for the judges of the Provincial Court of Saskatchewan as judges must remain current in a world where the law and society are always changing.

A committee of Provincial Court judges organizes two educational conferences each year to meet this goal. The conferences generally address changes to the law, policy considerations and awareness of social context. Retired judges who sit as relief or temporary judges attend an annual one-day seminar in order to keep current with the law.

The 2014 spring conference covered a number of areas including psychiatric and psychological assessments for youth, recent case law updates, civil law issues, and selected *Charter* issues. In the fall, the judges attended *en banc* to Manitoba for the Canadian Association of Provincial Court Judges (CAPCJ) annual education conference on Criminalizing Social Issues, which looked at the justice system's treatment of chronic offenders, as well as innovative ways of delivering justice to marginalized people.

At the conference held in spring 2015, the Court discussed a number of areas surrounding the self-represented litigant. As in the previous year, the judges attended *en banc* to a pre-existing learning opportunity in the Fall. In this case, it was the Aboriginal Peoples and the Law conference hosted by the Canadian Institute for the Administration of Justice in Saskatoon.

Judges also have the opportunity to attend conferences organized by the Canadian Association of Provincial Court Judges, the National Judicial Institute and other organizations. Some of these conferences provide specialized training for judges who sit in the therapeutic courts such as the Drug Treatment Court and for judges who conduct proceedings in French.

Newly appointed judges attend two additional conferences, usually within a year of their appointment. One of the conferences, which deals with substantive law, is held in Quebec and is attended by provincial court judges from across Canada. The other conference is held in Ontario and provides judges with opportunities to develop practical skills such as courtroom management and communication skills.

Judges from the Prairie provinces and the territories also organize an annual judgment writing seminar to assist judges in writing clear and concise judgments.

Public Education

The Provincial Court undertakes a number of public education activities that help to make the Court more accessible and understandable to people who use it and to members of the public.

The Court hosts approximately 100 classes and groups for court visits at its various locations each year. High school teachers frequently bring law classes to the Court to observe proceedings and in many cases, speak to a judge. Increasing numbers of post-secondary instructors also bring students to observe. Forensic psychology students, justice studies classes, security graduates, journalism students, and victim's services and sexual assault nurse examiner trainees are some of the groups that visit as a part of their course.

As a result of outreach from Court staff, groups of new Canadians began to visit the Courts and learn first-hand about the Canadian justice system in early 2014. The visits caught on and Court staff in Regina now speak to four citizenship classes and approximately six language classes each year. Each visit includes a pre-visit presentation several days ahead of time to help introduce terminology and concepts. This is followed by a group trip to observe a court proceeding, which includes time for a follow-up discussion to answer any questions. This two-part program has been well-received and efforts are now underway to broaden the reach of the program to include other communities.

In October 2015, after almost a year of planning and development both internally and with Regina's 11 and Under Initiative (a precursor of The Regina Intersectoral Partnership, or TRiP), the Lunch With a Judge program launched. Several times a year, students identified by TRiP staff visit the Provincial Court in Regina accompanied by TRiP team members. The students spend the morning with a judge, including time watching Court, talking in the soft room, and learning the roles of the people in the courtroom. The morning wraps up with a pizza lunch and reflection on the what the students observed. Early feedback has been positive.

Jurisdiction

Civil Division - Small Claims

The Provincial Court has jurisdiction over civil disputes involving claims of \$20,000 or less in value* – also known as Small Claims Court. Judges presiding over Small Claims Court are skilled in settling disputes.

Small Claims Court is meant to be an easier and less expensive way to resolve disputes. While lawyers can and sometimes do handle these cases, many people choose to represent themselves. Sample forms are available online and at court offices. The emphasis, when dealing with the claims, is on the facts rather than procedural or legal technicalities.

The Court has implemented case management processes to settle matters without a trial, or if that is not possible, to ensure trials are ready to proceed and parties are prepared to present their case.

Adult Criminal

The Provincial Court deals with the large majority of all adult criminal charges laid in the province of Saskatchewan. This includes charges under the *Criminal Code of Canada*, *The Controlled Drugs and Substances Act*, *The Income Tax Act* and other statutes passed by the Parliament of Canada.

All criminal charges begin with an appearance in Provincial Court. All summary offences and some indictable offences are heard entirely in Provincial Court by a Provincial Court judge. For other indictable offences, the person charged has the right of election and can choose to be tried by a Provincial Court judge, a Queen's Bench judge sitting alone or a Queen's Bench judge and a jury. In the event that an election is made to have a trial in the Court of Queen's Bench, a preliminary hearing may be held in Provincial Court.

Case management conferences again help to ensure trials are ready to proceed. Case management can also help to narrow the scope of the issues at trial if the parties are able to agree on specific facts, and in some cases, can help to bring about joint sentencing recommendations.

The Adult Criminal Division includes the Court's therapeutic courts, about which more can be found elsewhere in this report.

* Subsequent to the period of this report, the Small Claims limit was increased to \$30,000.

Youth Criminal Justice

The *Youth Criminal Justice Act* applies to youth between the ages of 12 and 17, inclusive, who are charged with a crime. With the exception of several serious offences, charges under the Act are dealt with in Provincial Court. Provincial Court judges sit as Youth Justice Court judges in every city and circuit point in the province.

Family Law

The Provincial Court has limited jurisdiction in the area of family law. It conducts child protection hearings initiated by the Ministry of Social Services at court locations outside of Regina, Saskatoon and Prince Albert. (In those cities, child protection matters are handled by the Court of Queen's Bench.)

Traffic and Municipal

The Provincial Court has jurisdiction to hear matters involving traffic offences (such as speeding) and other provincial statutes, as well as municipal statutes (such as noise infractions or animal protection violations). In some major centres, such as Regina, Saskatoon, Prince Albert, and Estevan, separate courts are set aside for these matters, and are presided over by Justices of the Peace. In other centres, they are usually part of the regular court docket, but if these offences take too much time in any particular location causing delays in more serious matters, Justices of the Peace can and have been appointed to hear those matters, as well.

Therapeutic Courts

Therapeutic justice is an evidence-based approach that seeks to end the revolving door of crime and jail through court-led initiatives that break cycles of abuse and crime and assist troubled individuals who without help could not stop their criminal behaviour.

Aboriginal and Cree Courts

In Northern Saskatchewan, there are Aboriginal and Cree Courts. The language ability of the presiding judge allows for some of the proceedings and the sentencing to be done in the first language of the accused. Input from community leaders is encouraged and traditional values regarding respect for one's family and community are emphasized in addition to the sentencing principles in the *Criminal Code*.

Domestic Violence Courts

There are three provincially funded Domestic Violence Courts, located in Saskatoon, Regina and North Battleford. Participation in the program is voluntary and the Crown screens out cases of extreme violence. Individuals who enter the program will be required to enter a guilty plea, take and complete a counselling program for domestic violence, and address any substance abuse problems they have. Their progress is monitored by the Court, which results in much higher rates of completion than probation orders. Individuals who complete the program will receive a reduced sentence. The public benefits as the Court breaks a generational pattern of family violence.

Table 5: Participation Rates in the Domestic Violence Courts *

April 2014 to March 2015	Battlefords DVTOC	Regina DVC	Saskatoon DVC
Total Cases	129	854	904
Males	100	661	720
Females	29	193	184

* Note: The reporting period for the therapeutic courts is aligned with the government's fiscal year, rather than the calendar years covered in this report.

Table 6: Battlefords Domestic Violence Treatment Options Court Sentencing Outcomes 2014-15

	Completed Treatment (n=18)		Discontinued from Treatment (n=14)	
Absolute Discharge	8	44%	-	-
Conditional Discharge	5	28%	6	43%
Suspended Sentence	3	17%	4	29%
CSO* with Probation	2	11%	2	14%
Fine	-	-	-	-
Time Served/Jail	-	-	2	14%

* Conditional Sentence Order

Table 7: Regina Domestic Violence Court Sentencing Outcomes 2014-15

	Completed Treatment (n=30)		Discontinued from Treatment (n=12)	
Absolute Discharge	16	54%	-	-
Conditional Discharge	6	20%	3	25%
Suspended Sentence	7	23%	6	50%
CSO* with Probation	-	-	2	17%
Fine	1	3%	1	8%
Time Served/Jail	-	-	-	-

* Conditional Sentence Order

Table 8: Saskatoon Domestic Violence Court Sentencing Outcomes 2014-15

	Completed Treatment (n=133)		Discontinued from Treatment (n=39)	
Absolute Discharge	93	70%	-	-
Conditional Discharge	18	14%	6	15%
Suspended Sentence	12	9%	25	64%
CSO* with Probation	8	6%	3	8%
Fine	-		-	
Time Served/Jail	2	1%	5	13%

* Conditional Sentence Order

Mental Health Courts

Saskatoon and Regina both operate mental health therapeutic initiatives. The courts work towards finding appropriate resolutions for individuals charged with criminal offences who suffer from mental disorders, cognitive impairment, or Fetal Alcohol Spectrum Disorder (FASD).

The Mental Health Courts rely upon other agencies to provide assessments and services. Obtaining resources for this population is an ongoing challenge, and even getting the accused, who may be brain damaged or delusional, to attend for treatment or court can be difficult.

Researchers from both the University of Saskatchewan and the University of Regina have been actively involved in assessing the work of the Mental Health Courts in those two cities. The Courts and the participating agencies use the results of these assessments to measure progress against goals and to guide the future work of the initiatives.

Drug Treatment Courts

Saskatchewan has two Drug Treatment Courts, one federally funded, located in Regina with a caseload of 30 and another small, unfunded mini Drug Treatment Court in Moose Jaw with four to five participants.

The Regina Drug Treatment Court will celebrate its 10th anniversary in 2016. Accused persons who are addicted and facing incarceration and genuinely want to shed their addiction and break their cycle of drugs and crime can apply to enter the program. There is a short waiting list. Some applicants, when they realize they must commit to attending programming five days a week for 12 to 18 months, with weekly plus random drug testing, choose to do their time instead.

To graduate, individuals must be committed and work hard to change their addictive behaviour. By the end of the program, the successful graduate will have spent hundreds of hours in programming and counselling, have been demonstrably clean for at least three but often six to nine months, and be employed or in school.

The success of the Regina Drug Treatment Court is reflected in the Alumni Program. Graduates of the program have voluntarily formed an association to support fellow graduates. They have a website, meet regularly and are incorporated. They provide support to fellow graduates, encourage current participants in Drug Treatment Court and speak to professional groups and members of the public about how graduating from Drug Treatment Court has changed their lives.

A Day at Drug Treatment Court

Dawn Blaus

Courts Communications Officer

It's a typical pre-court meeting at Regina's Drug Treatment Court.

The group gathered around the table at the rear of the courtroom moves through the files efficiently – updating each other on how the week went for their shared clients. Each brings a different perspective – and a different set of information.

One team member gives an update on personal and family life: a client is struggling to get kids to daycare using public transportation; another is managing a case of pink eye in their child; yet another is thriving in school, earning 90s where they'd previously been receiving 60s. A different team member reports the results of regular drug screens. Still other members talk about the behaviour and attendance of individual clients at programming.

It becomes apparent through this process that one of the clients has been giving inconsistent information to different team members. It's a flag for follow up. It's also noted that a different client is on the run and hasn't been seen at programming or the residence for a number of days.

Good reports can result in the team recommending fewer restrictions – removal of electronic monitoring or a later curfew, for example. Conversely, poor reports – dirty screens, missed programming, poor behaviour – lead to recommendations that the judge impose 'sanctions.' These could include stricter curfews, community service, attendance at Narcotics Anonymous meetings, or even short-term remand stays, depending on the severity of the infraction.

Among the team members seated at the table is the Crown prosecutor assigned to the Drug Treatment Court (DTC). Legal Aid defence counsel is there, too. Others at the table include a probation officer, nurse, addictions counsellors, Ministry of Social Services staff, a representative from Kate's Place (a residence for women in the program), and, of course, the judge. The pre-Court meeting is the judge's opportunity to hear from the team.



This morning, for example, discussion turns to one of the clients who's been skipping programming and ignoring or hanging up

on phone calls from her lawyer. The team urges the judge to confront her with her behaviour in order to determine whether she wants to stay in programming or be sentenced. Later, in the courtroom, the judge will talk directly to the participant – along with all of the others – and ask her about what he's heard and how she's feeling for her part.

The Regina DTC began in 2006, the third therapeutic court to open its doors in Saskatchewan. (The Battlefords Domestic Violence Treatment Options Court began in 2003, while the Saskatoon Domestic Violence Court started in 2005.) The approach is a multidisciplinary one – bringing together justice, health, and social

services agencies and professionals to address programming and support needs for individuals with addictions who are caught up in the court system. The goal is to interrupt the “revolving door” cycle where users are caught for low-level crimes, receive and serve short jail sentences, and are then released back into the community with no better insight or ability to control their addiction, and soon start re-offending. Accused individuals who want to enter the DTC must accept responsibility for their offences by pleading guilty. They must also agree to attend individualized day programming (averaging about 240 hours),



to abide by bail conditions restricting their activities and including drug testing, and to appear in front of a judge regularly. It can sound deceptively easy to those facing a long

jail sentence. Participants learn quickly, though, that they have a lot of hard work ahead of them if they’re going to be successful.

There’s a brief break between the pre-Court meeting and when Court begins. When Court begins, participants are now also in the courtroom, and are called forward one by one. The judge asks for updates, often probing deeper using information gleaned at the pre-Court meeting.

First up this morning is a woman who is preparing to graduate from the program in a few weeks. The judge confirms details of her charge and recounts her progress through the treatment steps with counsel: in October, the woman sold meth to an undercover officer; she entered the DTC

program the following March and was set to complete the final track of the program in June, 15 months after she began.

When the charge first came to court, the federal Crown’s sentencing position was a custodial sentence of 18 months. Based on her success in the program, the Crown is now recommending a four-month conditional sentence that can be served in the community. Defence counsel notes that the woman had been using crystal meth since 2000 and was addicted. Since beginning the program, she has not only sobered up, but has also regained access to her child and hopes to see that access increased.

She tells the judge that while she credits the program for her sobriety, what she really gained was a future. The judge responds, noting how proud the team members are of her. And then there is the sound of something not often heard in a courtroom: applause.

Others in the courtroom share in the successes – and the challenges – of their fellow participants. And they share in the learning that takes place as they listen to the judge speak to others. It doesn’t take long to see that praise from a judge is an important motivating factor for many.

The next couple of people to be called forward are new referrals, and a previous participant who’d like to re-enter the program. There’s no room at this time, though, so she is remanded into custody for a week. Next up is a man preparing to graduate in two months. The judge asks him what works for him? “Having a goal to work toward,” he answers. There are nods from those seated in the courtroom. The judge asks each person that same question. Staying focussed and reducing stressors is a common answer.

The docket continues. One participant will have his electronic monitoring bracelet removed, although the Crown isn't quite ready to agree to a request for a shortened curfew. Another had been late for class twice, causing disruption and showing disrespect for the instructor and other participants. He receives sanctions: he must attend three meetings next week. He apologizes and takes his seat.

Last to be called forward is a female participant who is being sentenced today. She's been in the program for about 14 months and was almost ready to graduate. Instead, she used drugs while visiting a friend the previous week. Using automatically pushes back graduation another three months – grads must have three clean months behind them.

Sometimes participants are allowed an extension of time in the program in a situation like this – their graduation date is simply pushed back. At the pre-Court meeting, though, the team noted that there was not a lot more that the program could do for her. They pointed out that she'd gained a lot of tools to use in her struggle with addiction during her time in the program. The team recommended proceeding to sentencing, and urged the judge to remind her of what she'd learned and the services available in the community to help her.

When it's her turn to speak, the participant being sentenced talks about the positives she's gained in DTC, including being reunited with her children and successfully upgrading her education. She's grateful for the opportunities and acknowledges that without DTC, it likely wouldn't have happened. Her relapse has also helped to open her eyes, she says, showing her she's got to make some tough choices, since her best friend is still using and every time she's with her, she relapses and uses, too.

It's clear that failure to graduate is not necessarily a complete failure. She, like other 'unsuccessful' participants, has benefited from her time in the program: learning skills and techniques, addressing problematic behaviours and ideas, and creating relationships with supportive community agencies.

The Crown notes that its original sentencing position had been nine months. Given the progress the woman made in the program, the Crown instead asks for a suspended sentence of probation for six months. The judge adopts the sentence and, as requested pre-Court, advises the woman to continue to use the tools she'd been given.

She promises the judge that she won't use, that she is going to "stay on recovery road."

Court is adjourned.

Court Administration

Permanent Locations

There are 13 permanent locations of the Provincial Court across Saskatchewan. Each of these locations has at least one resident judge and a court office with court staff that are responsible for maintaining the office and files, managing inquiries, clerking in court, and providing support to the judge(s).

Circuit Points

Each office also administers several circuit points, locations where Court is held as seldom as once every two months or as often as several times each week. Almost all judges participate in circuit work, travelling to the communities in their area to hold Court and hear cases.

Court Records

The general rule in Canada is that court records, like court proceedings, are open to the public. The Provincial Court endorses the open court principle, striving for a balance between open courts and the fair administration of justice.

In some instances, such as with *Youth Criminal Justice Act* records, legislation limits or restricts the right of access. In other cases, a judge may make an order that similarly limits or restricts access to a specific proceeding or record of same. The Provincial Court, like other courts, is not subject to Freedom of Information and Protection of Privacy legislation.

Court records are maintained locally at the Provincial Court's 13 permanent locations. Depending on storage capacity, older files are moved off-site for storage, but are still retrievable. The Court's data system does not permit broad or blanket-type searches. There is also no capability to provide searchable information online at this time.

Estevan



Resident Judge:

The Honourable K. P. Bazin (transferred to Swift Current May 2014)
The Honourable L. Wiegers (appointed March 2014)

Circuit Points:

Carlyle
Carnduff

Weyburn

Estevan

Selected Statistics for the Estevan Court Office

# New Charges	Youth	Adult	TOTAL
Jan.-Dec. 2011	308	2353	2661
Jan.-Dec. 2012	301	2669	2970
Jan.-Dec. 2013	369	2438	2807
Jan.-Dec. 2014	272	2249	2521
Jan.-Dec. 2015	258	2490	2748

# New Accused	Youth	Adult	TOTAL
Jan.-Dec. 2011	178	1172	1350
Jan.-Dec. 2012	156	1426	1582
Jan.-Dec. 2013	140	1276	1416
Jan.-Dec. 2014	129	1189	1318
Jan.-Dec. 2015	124	1241	1365

# Concluded Charges	Youth	Adult	TOTAL
Jan.-Dec. 2011	385	2052	2437
Jan.-Dec. 2012	398	2486	2884
Jan.-Dec. 2013	396	2682	3078
Jan.-Dec. 2014	350	2168	2518
Jan.-Dec. 2015	257	2135	2392

# Concluded Accused	Youth	Adult	TOTAL
Jan.-Dec. 2011	169	874	1043
Jan.-Dec. 2012	153	1100	1253
Jan.-Dec. 2013	117	1033	1150
Jan.-Dec. 2014	111	972	1083
Jan.-Dec. 2015	113	924	1037

Note: These statistics include only federal charges, such as those arising from the *Criminal Code*, the *Controlled Drugs and Substances Act* and the *Youth Criminal Justice Act*.

La Ronge



Resident Judges:

The Honourable R. Lane
The Honourable S. I. Robinson

Circuit Points:

Black Lake
Creighton
Cumberland House
Deschambault Lake
Fond du Lac

Pinehouse
Southend
Stanley Mission
Wollaston Lake

La Ronge

Selected Statistics for the La Ronge Court Office

# New Charges	Youth	Adult	TOTAL
Jan.-Dec. 2011	1425	3717	5142
Jan.-Dec. 2012	1020	5309	6329
Jan.-Dec. 2013	1286	5867	7153
Jan.-Dec. 2014	1272	5275	6547
Jan.-Dec. 2015	1456	4694	6150

# New Accused	Youth	Adult	TOTAL
Jan.-Dec. 2011	519	1841	2360
Jan.-Dec. 2012	448	2421	2869
Jan.-Dec. 2013	463	2682	3145
Jan.-Dec. 2014	418	2340	2758
Jan.-Dec. 2015	483	2012	2495

# Concluded Charges	Youth	Adult	TOTAL
Jan.-Dec. 2011	1590	4102	5692
Jan.-Dec. 2012	1206	5364	6570
Jan.-Dec. 2013	1342	6285	7627
Jan.-Dec. 2014	1498	6026	7524
Jan.-Dec. 2015	1490	5048	6538

# Concluded Accused	Youth	Adult	TOTAL
Jan.-Dec. 2011	441	1607	2048
Jan.-Dec. 2012	371	1897	2268
Jan.-Dec. 2013	353	2054	2407
Jan.-Dec. 2014	333	1988	2321
Jan.-Dec. 2015	341	1645	1986

Note: These statistics include only federal charges, such as those arising from the *Criminal Code*, the *Controlled Drugs and Substances Act* and the *Youth Criminal Justice Act*.

Lloydminster



Resident Judge:

The Honourable K. J. Young

Circuit Points:

Onion Lake First Nation

St. Walburg

Lloydminster

Selected Statistics for the Lloydminster Court Office

# New Charges	Youth	Adult	TOTAL
Jan.-Dec. 2011	540	3292	3832
Jan.-Dec. 2012	324	3170	3494
Jan.-Dec. 2013	367	3080	3447
Jan.-Dec. 2014	368	3892	4260
Jan.-Dec. 2015	470	4165	4635

# New Accused	Youth	Adult	TOTAL
Jan.-Dec. 2011	187	1505	1692
Jan.-Dec. 2012	163	1487	1650
Jan.-Dec. 2013	158	1475	1633
Jan.-Dec. 2014	123	1487	1610
Jan.-Dec. 2015	169	1593	1762

# Concluded Charges	Youth	Adult	TOTAL
Jan.-Dec. 2011	697	3126	3823
Jan.-Dec. 2012	328	3393	3721
Jan.-Dec. 2013	345	2957	3302
Jan.-Dec. 2014	540	3725	4265
Jan.-Dec. 2015	515	4487	5002

# Concluded Accused	Youth	Adult	TOTAL
Jan.-Dec. 2011	136	942	1078
Jan.-Dec. 2012	98	1029	1127
Jan.-Dec. 2013	100	943	1043
Jan.-Dec. 2014	111	1052	1163
Jan.-Dec. 2015	142	1139	1281

Note: These statistics include only federal charges, such as those arising from the *Criminal Code*, the *Controlled Drugs and Substances Act* and the *Youth Criminal Justice Act*.

Meadow Lake



Resident Judges:

The Honourable Judge D. J. Bird
The Honourable Judge E. Kalenith (transferred to Prince Albert January 2014)
The Honourable Judge M. Martinez (appointed February 2014)
The Honourable Judge J. McIvor (appointed February 2014)

Circuit Points:

Beauval	Canoe Lake
Big Island Lake Cree Territory	English River
Birch Narrows First Nation (Turnor Lake)	Ile a la Crosse
Buffalo Narrows	La Loche
Buffalo River First Nation	Loon Lake
	Pierceland

Meadow Lake

Selected Statistics for the Meadow Lake Court Office

# New Charges	Youth	Adult	TOTAL
Jan.-Dec. 2011	1264	5827	7091
Jan.-Dec. 2012	1747	6662	8409
Jan.-Dec. 2013	1399	6645	8044
Jan.-Dec. 2014	950	5843	6793
Jan.-Dec. 2015	795	6314	7109

# New Accused	Youth	Adult	TOTAL
Jan.-Dec. 2011	479	2567	3046
Jan.-Dec. 2012	502	2937	3439
Jan.-Dec. 2013	464	2913	3377
Jan.-Dec. 2014	328	2529	2857
Jan.-Dec. 2015	307	2767	3074

# Concluded Charges	Youth	Adult	TOTAL
Jan.-Dec. 2011	1213	6358	7571
Jan.-Dec. 2012	1992	6494	8486
Jan.-Dec. 2013	1458	6145	7603
Jan.-Dec. 2014	1248	6816	8064
Jan.-Dec. 2015	912	6615	7527

# Concluded Accused	Youth	Adult	TOTAL
Jan.-Dec. 2011	349	2035	2384
Jan.-Dec. 2012	367	1965	2332
Jan.-Dec. 2013	279	1887	2166
Jan.-Dec. 2014	253	1941	2194
Jan.-Dec. 2015	201	1937	2138

Note: These statistics include only federal charges, such as those arising from the *Criminal Code*, the *Controlled Drugs and Substances Act* and the *Youth Criminal Justice Act*.

Melfort



Resident Judges:

The Honourable Judge I. J. Cardinal
The Honourable Judge J. Rybchuk

Circuit Points:

Carrot River
Hudson Bay
Nipawin

Tisdale
Wakaw

Melfort

Selected Statistics for the Melfort Court Office

# New Charges	Youth	Adult	TOTAL
Jan.-Dec. 2011	741	2437	3178
Jan.-Dec. 2012	567	2258	2825
Jan.-Dec. 2013	570	2284	2854
Jan.-Dec. 2014	585	2307	2892
Jan.-Dec. 2015	692	2324	3016

# New Accused	Youth	Adult	TOTAL
Jan.-Dec. 2011	319	1105	1424
Jan.-Dec. 2012	260	1126	1386
Jan.-Dec. 2013	202	1017	1219
Jan.-Dec. 2014	180	1040	1220
Jan.-Dec. 2015	205	1051	1256

# Concluded Charges	Youth	Adult	TOTAL
Jan.-Dec. 2011	783	2717	3500
Jan.-Dec. 2012	829	2448	3277
Jan.-Dec. 2013	548	2361	2909
Jan.-Dec. 2014	639	2163	2802
Jan.-Dec. 2015	623	2420	3043

# Concluded Accused	Youth	Adult	TOTAL
Jan.-Dec. 2011	226	970	1196
Jan.-Dec. 2012	243	962	1205
Jan.-Dec. 2013	159	854	1013
Jan.-Dec. 2014	158	802	960
Jan.-Dec. 2015	138	848	986

Note: These statistics include only federal charges, such as those arising from the *Criminal Code*, the *Controlled Drugs and Substances Act* and the *Youth Criminal Justice Act*.

Moose Jaw



Resident Judges:

The Honourable Judge M. Gordon
The Honourable Judge D. J. Kovatch

Circuit Point:

Assiniboia

Moose Jaw

Selected Statistics for the Moose Jaw Court Office

# New Charges	Youth	Adult	TOTAL
Jan.-Dec. 2011	606	3106	3712
Jan.-Dec. 2012	623	3003	3626
Jan.-Dec. 2013	648	2714	3362
Jan.-Dec. 2014	493	2930	3423
Jan.-Dec. 2015	396	2483	2879

# New Accused	Youth	Adult	TOTAL
Jan.-Dec. 2011	238	1486	1724
Jan.-Dec. 2012	259	1475	1734
Jan.-Dec. 2013	193	1317	1510
Jan.-Dec. 2014	169	1310	1479
Jan.-Dec. 2015	160	1225	1385

# Concluded Charges	Youth	Adult	TOTAL
Jan.-Dec. 2011	513	2825	3338
Jan.-Dec. 2012	627	2890	3517
Jan.-Dec. 2013	679	2909	3588
Jan.-Dec. 2014	755	2797	3552
Jan.-Dec. 2015	398	2921	3319

# Concluded Accused	Youth	Adult	TOTAL
Jan.-Dec. 2011	149	1054	1203
Jan.-Dec. 2012	189	1049	1238
Jan.-Dec. 2013	162	995	1157
Jan.-Dec. 2014	149	909	1058
Jan.-Dec. 2015	121	986	1107

Note: These statistics include only federal charges, such as those arising from the *Criminal Code*, the *Controlled Drugs and Substances Act* and the *Youth Criminal Justice Act*.

North Battleford



Resident Judges:

The Honourable Judge B. Bauer (appointed July 2014)

The Honourable Judge L. D. Dyck

The Honourable Judge D. J. Kaiser (retired July 2014)

The Honourable Judge D. J. O'Hanlon

Circuit Points:

Biggar

Cut Knife

Pelican Lake First Nation (*Held in
Spiritwood due to facility issues*)

Spiritwood

Unity

North Battleford

Selected Statistics for the North Battleford Court Office

# New Charges	Youth	Adult	TOTAL
Jan.-Dec. 2011	2027	5585	7612
Jan.-Dec. 2012	1461	5163	6624
Jan.-Dec. 2013	1353	4717	6070
Jan.-Dec. 2014	1190	5091	6281
Jan.-Dec. 2015	1577	5234	6811

# New Accused	Youth	Adult	TOTAL
Jan.-Dec. 2011	591	2484	3075
Jan.-Dec. 2012	432*	2360	2792
Jan.-Dec. 2013	528	2164	2692
Jan.-Dec. 2014	487	2315	2802
Jan.-Dec. 2015	471	2440	2911

# Concluded Charges	Youth	Adult	TOTAL
Jan.-Dec. 2011	2026	5491	7517
Jan.-Dec. 2012	1899	5201	7100
Jan.-Dec. 2013	1517	5298	6815
Jan.-Dec. 2014	1346	5166	6512
Jan.-Dec. 2015	1692	5558	7250

# Concluded Accused	Youth	Adult	TOTAL
Jan.-Dec. 2011	426	1757	2183
Jan.-Dec. 2012	388	1747	2135
Jan.-Dec. 2013	406	1746	2152
Jan.-Dec. 2014	379	1698	2077
Jan.-Dec. 2015	371	1882	2253

Note: These statistics include only federal charges, such as those arising from the *Criminal Code*, the *Controlled Drugs and Substances Act* and the *Youth Criminal Justice Act*.

* Excluding January to March 2012, due to incomplete information

Prince Albert



Resident Judges:

The Honourable Judge M. M. Baniak (transferred to Saskatoon December 2015)
The Honourable Judge S. C. Carter (retired April 1 2014)
The Honourable Judge F. M. Daunt
The Honourable Judge H. M. Harradence
The Honourable Judge E. Kalenith (transferred from Meadow Lake January 2014)
The Honourable Judge S. D. Loewen
The Honourable Judge G. M. Morin
The Honourable Judge S. Schiefner (appointed November 2015)

Circuit Points:

Ahtahkakoop First Nation
Big River
Montreal Lake
Pelican Narrows

Sandy Bay
Shellbrook
Whitefish First Nation

Prince Albert

Selected Statistics for the Prince Albert Court Office

# New Charges	Youth	Adult	TOTAL
Jan.-Dec. 2011	2717	9357	12074
Jan.-Dec. 2012	2592	9484	12076
Jan.-Dec. 2013	2423	10609	13032
Jan.-Dec. 2014	2684	11396	14080
Jan.-Dec. 2015	2543	11476	14019

# New Accused	Youth	Adult	TOTAL
Jan.-Dec. 2011	965	4213	5178
Jan.-Dec. 2012	971	4361	5332
Jan.-Dec. 2013	835	4537	5372
Jan.-Dec. 2014	1029	4895	5924
Jan.-Dec. 2015	969	5158	6127

# Concluded Charges	Youth	Adult	TOTAL
Jan.-Dec. 2011	2883	9476	12359
Jan.-Dec. 2012	2820	8977	11797
Jan.-Dec. 2013	2686	10310	12996
Jan.-Dec. 2014	2615	11715	14330
Jan.-Dec. 2015	3028	11840	14868

# Concluded Accused	Youth	Adult	TOTAL
Jan.-Dec. 2011	702	3003	3705
Jan.-Dec. 2012	646	2838	3484
Jan.-Dec. 2013	571	2997	3568
Jan.-Dec. 2014	567	3268	3835
Jan.-Dec. 2015	667	3216	3883

Note: These statistics include only federal charges, such as those arising from the *Criminal Code*, the *Controlled Drugs and Substances Act* and the *Youth Criminal Justice Act*.

Regina



Resident Judges:

The Honourable Judge M. T. Beaton
The Honourable Judge A. M. Crugnale-Reid
The Honourable Judge P. Demong
The Honourable Judge L. A. Halliday
The Honourable Judge B. D. Henning
The Honourable Judge M. J. Hinds
The Honourable Judge J. Kalmakoff (appointed to Court of Queen's Bench June 2015)
The Honourable Judge K. A. Lang
The Honourable Judge C.A. Snell
The Honourable Judge B. J. Tomkins
The Honourable Judge C. C. Toth

Circuit Points:

Carry the Kettle First Nation (Held in
Indian Head due to facility issues)
Fort Qu'Appelle

Indian Head
Southey

Regina

Selected Statistics for the Regina Court Office

# New Charges	Youth	Adult	TOTAL
Jan.-Dec. 2011	2892	16533	19425
Jan.-Dec. 2012	2981	16467	19448
Jan.-Dec. 2013	3401	15988	19389
Jan.-Dec. 2014	2706	15076	17782
Jan.-Dec. 2015	2995	17081	20076

# New Accused	Youth	Adult	TOTAL
Jan.-Dec. 2011	1400	8848	10248
Jan.-Dec. 2012	1492	8601	10093
Jan.-Dec. 2013	1329	8232	9561
Jan.-Dec. 2014	1136	7590	8726
Jan.-Dec. 2015	1189	8099	9288

# Concluded Charges	Youth	Adult	TOTAL
Jan.-Dec. 2011	3213	16489	19702
Jan.-Dec. 2012	3464	17311	20775
Jan.-Dec. 2013	3589	16314	19903
Jan.-Dec. 2014	3107	15831	18938
Jan.-Dec. 2015	2920	16983	19903

# Concluded Accused	Youth	Adult	TOTAL
Jan.-Dec. 2011	1066	5735	6801
Jan.-Dec. 2012	1081	5900	6981
Jan.-Dec. 2013	954	5728	6682
Jan.-Dec. 2014	835	5347	6182
Jan.-Dec. 2015	803	5477	6280

Note: These statistics include only federal charges, such as those arising from the *Criminal Code*, the *Controlled Drugs and Substances Act* and the *Youth Criminal Justice Act*.

Saskatoon



Resident Judges:

The Honourable Judge Q. D. Agnew
The Honourable Judge S. Anand (appointed October 2014)
The Honourable Judge M.M. Baniak (transferred from Prince Albert December 2015)
The Honourable Judge M. Gray
The Honourable Judge M. D. Irwin (retired April 2014)
The Honourable Judge R. D. Jackson
The Honourable Judge B. M. Klause
The Honourable Judge P. S. Kolenick *
The Honourable Judge D. E. Labach (appointed to Court of Queen's Bench June 2015)
The Honourable Judge D. A. Lavoie *
The Honourable Judge S. Metivier
The Honourable Judge V. Monar Enweani (appointed July 2015)
The Honourable Judge B. G. Morgan
The Honourable Judge D. C. Scott
The Honourable Judge B. M. Singer
The Honourable Judge S. P. Whelan (retired August 2014)
The Honourable Judge B. Wright (appointed March 2014)

Circuit Points:

Beardy's and Okemasis First Nation
Blaine Lake
Humboldt
Kindersley

Outlook
Rosetown
Rosthern
Watrous

* Note: Subsequent to the reporting period, Judges Lavoie, Kolenick and Singer retired, and Judge Mary Ellen Turpel-Lafond returned to the Court after being on leave.

Saskatoon

Selected Statistics for the Saskatoon Court Office

# New Charges	Youth	Adult	TOTAL
Jan.-Dec. 2011	4556	18754	23310
Jan.-Dec. 2012	4102	19487	23589
Jan.-Dec. 2013	3335	19309	22644
Jan.-Dec. 2014	3883	20220	24103
Jan.-Dec. 2015	3418	22849	26267

# New Accused	Youth	Adult	TOTAL
Jan.-Dec. 2011	2119	9430	11549
Jan.-Dec. 2012	1833	9588	11421
Jan.-Dec. 2013	1568	9319	10887
Jan.-Dec. 2014	1703	9531	11234
Jan.-Dec. 2015	1375	9768	11143

# Concluded Charges	Youth	Adult	TOTAL
Jan.-Dec. 2011	4402	19304	23706
Jan.-Dec. 2012	4539	19249	23788
Jan.-Dec. 2013	3701	19078	22779
Jan.-Dec. 2014	4093	19907	24000
Jan.-Dec. 2015	3575	21697	25272

# Concluded Accused	Youth	Adult	TOTAL
Jan.-Dec. 2011	1329	7032	8361
Jan.-Dec. 2012	1325	6713	8038
Jan.-Dec. 2013	1099	6508	7607
Jan.-Dec. 2014	1101	6517	7618
Jan.-Dec. 2015	961	6569	7530

Note: These statistics include only federal charges, such as those arising from the *Criminal Code*, the *Controlled Drugs and Substances Act* and the *Youth Criminal Justice Act*.

Swift Current



Resident Judge:

The Honourable Judge L. A. Matsalla (retired April 2014)

The Honourable Judge K.P. Bazin (transferred from Estevan May 2014)

Circuit Points:

Leader

Maple Creek

Shaunavon

Swift Current

Selected Statistics for the Swift Current Court Office

# New Charges	Youth	Adult	TOTAL
Jan.-Dec. 2011	278	1545	1823
Jan.-Dec. 2012	323	1424	1747
Jan.-Dec. 2013	242	1774	2016
Jan.-Dec. 2014	106	1607	1713
Jan.-Dec. 2015	301	1774	2075

# New Accused	Youth	Adult	TOTAL
Jan.-Dec. 2011	150	731	881
Jan.-Dec. 2012	133	689	822
Jan.-Dec. 2013	97	771	868
Jan.-Dec. 2014	72	723	795
Jan.-Dec. 2015	109	787	896

# Concluded Charges	Youth	Adult	TOTAL
Jan.-Dec. 2011	317	1567	1884
Jan.-Dec. 2012	295	1376	1671
Jan.-Dec. 2013	289	1646	1935
Jan.-Dec. 2014	138	1712	1850
Jan.-Dec. 2015	269	1522	1791

# Concluded Accused	Youth	Adult	TOTAL
Jan.-Dec. 2011	135	657	792
Jan.-Dec. 2012	138	602	740
Jan.-Dec. 2013	107	645	752
Jan.-Dec. 2014	74	639	713
Jan.-Dec. 2015	89	595	684

Note: These statistics include only federal charges, such as those arising from the *Criminal Code*, the *Controlled Drugs and Substances Act* and the *Youth Criminal Justice Act*.

Wynyard



Resident Judge:

The Honourable Judge J. A. Plemel (appointed Chief Judge, effective January 2015)

The Honourable Judge M. Marquette (appointed December 2014)

Circuit Points:

Punnichy
Rose Valley

Wadena

Wynyard

Selected Statistics for the Wynyard Court Office

# New Charges	Youth	Adult	TOTAL
Jan.-Dec. 2011	338	1274	1612
Jan.-Dec. 2012	280	1328	1608
Jan.-Dec. 2013	235	1427	1662
Jan.-Dec. 2014	512	1519	2031
Jan.-Dec. 2015	418	1835	2253

# New Accused	Youth	Adult	TOTAL
Jan.-Dec. 2011	138	765	903
Jan.-Dec. 2012	117	709	826
Jan.-Dec. 2013	121	750	871
Jan.-Dec. 2014	178	786	964
Jan.-Dec. 2015	169	814	983

# Concluded Charges	Youth	Adult	TOTAL
Jan.-Dec. 2011	397	1499	1896
Jan.-Dec. 2012	471	1521	1992
Jan.-Dec. 2013	240	1572	1812
Jan.-Dec. 2014	460	1463	1923
Jan.-Dec. 2015	614	1979	2593

# Concluded Accused	Youth	Adult	TOTAL
Jan.-Dec. 2011	125	645	770
Jan.-Dec. 2012	112	646	758
Jan.-Dec. 2013	89	592	681
Jan.-Dec. 2014	115	566	681
Jan.-Dec. 2015	132	642	774

Note: These statistics include only federal charges, such as those arising from the *Criminal Code*, the *Controlled Drugs and Substances Act* and the *Youth Criminal Justice Act*.

Yorkton



Resident Judges:

The Honourable Judge R. Green
The Honourable Judge P. R. Koskie
The Honourable Judge P. A. Reis

Circuit Points:

Broadview
Canora
Esterhazy

Kamsack
Melville
Moosomin

Yorkton

Selected Statistics for the Yorkton Court Office

# New Charges	Youth	Adult	TOTAL
Jan.-Dec. 2011	1212	4330	5542
Jan.-Dec. 2012	1031	4344	5375
Jan.-Dec. 2013	913	4486	5399
Jan.-Dec. 2014	812	4425	5237
Jan.-Dec. 2015	663	3940	4603

# New Accused	Youth	Adult	TOTAL
Jan.-Dec. 2011	399	1978	2377
Jan.-Dec. 2012	382	2030	2412
Jan.-Dec. 2013	357	2089	2446
Jan.-Dec. 2014	351	2035	2386
Jan.-Dec. 2015	259	1783	2042

# Concluded Charges	Youth	Adult	TOTAL
Jan.-Dec. 2011	1089	4495	5584
Jan.-Dec. 2012	1365	4308	5673
Jan.-Dec. 2013	1083	4706	5789
Jan.-Dec. 2014	893	4354	5247
Jan.-Dec. 2015	570	4413	4983

# Concluded Accused	Youth	Adult	TOTAL
Jan.-Dec. 2011	289	1608	1897
Jan.-Dec. 2012	375	1532	1907
Jan.-Dec. 2013	290	1657	1947
Jan.-Dec. 2014	274	1570	1844
Jan.-Dec. 2015	208	1485	1693

Note: These statistics include only federal charges, such as those arising from the *Criminal Code*, the *Controlled Drugs and Substances Act* and the *Youth Criminal Justice Act*.

Selected Statistics

Next Available Trial Date

The Next Available Trial Date report provides information related to the right that all persons charged with a criminal offence have to be tried within a reasonable time, pursuant to the *Canadian Charter of Rights*. It refers to the time period between the date when both the Crown and accused are prepared to set a date for trial or preliminary hearing, and the date when the court can hear the matter. What will be a reasonable time depends to a certain extent upon the complexity of the case and how many witnesses will have to testify. However, for most of the cases heard in Provincial Court, the time has been suggested by appellate courts to be around eight to 10 months.*

This report allows the Chief Judge and the judges of the Court to continuously assess whether they are able to meet the Court's responsibility to provide trials within a reasonable time. When the time to trial in a particular location becomes too lengthy, the Court may take action such as providing additional "special" court dates (either individual dates or a "blitz" of a week at a time) to address the problem. The Court requires additional Crown, Legal Aid and Court Services resources to conduct these special court proceedings, and has always received that cooperation.

Next Available Trial Date reports are posted quarterly on the Courts of Saskatchewan website (www.sasklawcourts.ca).

* Subsequent to the period covered by this report, the Supreme Court of Canada, in its decision in *R v Jordan*, 2016 SCC 27, established a new presumptive ceiling of 18 months from the time the charge is laid to the conclusion of criminal trials in Provincial Court.

Number of Days to Next Available Trial Date – Estevan Office

Court/ Location	Estevan	Carlyle	Carnduff	Weyburn (Small Claims)	Weyburn (Criminal Trials)
2015					
Jan. 1	89	84	64	48	151
Feb. 1	73	102	96	48	135
March 1	118	92	121	45	133
April 1	98	76	91	41	117
May 1	127	74	122	47	114
June 1	97	105	92	45	139
July 1	157	75	242	49	129
Aug. 1	202	80	134	136	113
Sept. 1	172	105	104	106	138
Oct. 1	173	95	152	76	94
Nov. 1	147	106	122	46	120
Dec. 1	118	91	92	50	104
2014					
Jan. 1	72	91	112	49	111
Feb. 1	56	48	82	138	47
March 1	58	31	122	74	37
April 1	99	43	118	41	69
May 1	81	54	88	48	108
June 1	51	72	58	46	64
July 1	143	56	63	105	61
Aug. 1	114	53	95	99	155
Sept. 1	98	78	127	69	159
Oct. 1	131	55	97	49	166
Nov. 1	121	73	67	81	170
Dec. 1	119	77	94	51	140

Court/ Location	Estevan	Carlyle	Carnduff	Weyburn (Small Claims)	Weyburn (Criminal Trials)
2013					
Jan. 1	36	22	66	13	22
Feb. 1	55	35	91	50	25
March 1	65	32	52	20	38
April 1	111	51	84	42	70
May 1	89	64	63	74	40
June 1	59	46	94	44	31
July 1	29	23	138	14	42
Aug. 1	114	40	34	45	26
Sept. 1	99	38	78	77	37
Oct. 1	69	63	91	47	110
Nov. 1	87	81	61	72	87
Dec. 1	67	85	95	42	107
2012					
Jan. 1	189	73	184	74	161
Feb. 1	161	70	154	106	131
March 1	163	41	366	73	115
April 1	53	45	174	80	44
May 1	27	35	64	50	69
June 1	59	101	95	106	73
July 1	90	10	84	107	63
Aug. 1	28	21	97	77	33
Sept. 1	40	32	67	78	17
Oct. 1	58	36	71	79	63
Nov. 1	89	82	41	49	33
Dec. 1	58	72	32	43	64

Number of Days to Next Available Trial Date – La Ronge Office

Court/ Location	Creighton	Cumberland House	Deschambault Lake	Fond du Lac	La Ronge
2015					
Jan. 1	172	62	201	140	140
Feb. 1	142	32	171	137	137
March 1	174	126	168	107	135
April 1	144	96	138	77	98
May 1	114	66	142	82	89
June 1	118	36	167	52	79
July 1	88	95	151	49	97
Aug. 1	134	65	107	108	94
Sept. 1	124	62	91	78	133
Oct. 1	178	94	136	48	103
Nov. 1	148	91	169	18	87
Dec. 1	145	124	167	77	77
2014					
Jan. 1	173	97	78	168	127
Feb. 1	178	95	172	83	138
March 1	148	65	142	53	122
April 1	145	62	139	78	126
May 1	142	103	136	48	103
June 1	112	119	168	80	100
July 1	206	89	166	50	70
Aug. 1	203	66	170	82	82
Sept. 1	203	36	197	79	127
Oct. 1	173	61	167	49	124
Nov. 1	143	65	199	81	131
Dec. 1	113	92	196	78	156

Court/ Location	Creighton	Cumberland House	Deschambault Lake	Fond du Lac	La Ronge
2013					
Jan. 1	85	119	106	80	162
Feb. 1	82	96	138	50	146
March 1	52	66	136	171	164
April 1	43	63	106	141	154
May 1	54	89	110	138	159
June 1	24	79	107	170	136
July 1	145	97	112	140	133
Aug. 1	115	67	109	*	*
Sept. 1	85	126	141	142	101
Oct. 1	117	96	77	139	105
Nov. 1	144	93	47	109	125
Dec. 1	148	51	50	143	143
2012					
Jan. 1	23	65	107	81	74
Feb. 1	83	35	105	106	51
March 1	53	60	137	138	110
April 1	23	30	107	108	94
May 1	55	96	77	139	92
June 1	25	66	47	109	130
July 1	57	36	78	141	148
Aug. 1	27	6	48	173	15
Sept. 1	52	93	80	143	143
Oct. 1	70	124	139	113	163
Nov. 1	88	124	139	68	174
Dec. 1	115	149	136	110	172

* Data not available

Number of Days to Next Available Trial Date – La Ronge Office (continued)

Court/ Location	Pinehouse	Southend	Stanley Mission	Stony Rapids (Black Lake)*	Wollaston
2015					
Jan. 1	159	98	53	97	118
Feb. 1	129	68	53	67	108
March 1	66	118	71	92	113
April 1	104	63	41	62	83
May 1	74	33	52	81	88
June 1	71	37	57	64	119
July 1	118	35	54	68	89
Aug. 1	88	39	86	93	59
Sept. 1	58	85	145	125	173
Oct. 1	75	55	115	122	143
Nov. 1	99	39	112	90	113
Dec. 1	69	63	104	76	146
2014					
Jan. 1	71	35	118	126	119
Feb. 1	130	124	88	123	89
March 1	100	94	72	107	59
April 1	105	99	83	77	84
May 1	75	96	115	68	116
June 1	72	66	112	92	148
July 1	42	36	117	62	145
Aug. 1	129	68	87	108	135
Sept. 1	99	38	57	74	105
Oct. 1	103	63	82	48	174
Nov. 1	73	33	52	93	144
Dec. 1	189	128	56	93	148

* *Stony Rapids Circuit Point moved to Black Lake, effective July 2013*

Court/ Location	Pinehouse	Southend	Stanley Mission	Stony Rapids (Black Lake)*	Wollaston
2013					
Jan. 1	71	93	174	65	86
Feb. 1	42	63	144	138	83
March 1	12	33	142	108	115
April 1	44	3	146	92	113
May 1	14	15	143	96	144
June 1	39	33	113	*	149
July 1	43	37	118	139	146
Aug. 1	61	103	**	**	**
Sept. 1	72	94	85	154	106
Oct. 1	15	64	117	124	118
Nov. 1	40	68	87	124	115
Dec. 1	44	59	148	156	115
2012					
Jan. 1	107	77	86	66	58
Feb. 1	43	92	56	50	57
March 1	68	96	53	95	116
April 1	72	66	113	79	86
May 1	42	98	83	77	84
June 1	74	95	114	81	88
July 1	44	93	112	77	113
Aug. 1	14	63	82	110	83
Sept. 1	39	68	86	108	107
Oct. 1	71	99	145	78	119
Nov. 1	102	96	40	48	146
Dec. 1	101	96	204	79	116

* *Stony Rapids Circuit Point moved to Black Lake, effective July 2013*

** *Data not available*

Number of Days to Next Available Trial Date – Lloydminster Office

Court/ Location	Lloydminster	Onion Lake	St. Walburg		
2015					
Jan. 1	85	139	70		
Feb. 1	59	109	67		
March 1	42	79	37		
April 1	60	49	42		
May 1	58	46	39		
June 1	86	64	36		
July 1	26	34	33		
Aug. 1	43	93	38		
Sept. 1	61	91	49		
Oct. 1	45	121	60		
Nov. 1	90	169	64		
Dec. 1	96	194	61		
2014					
Jan. 1	69	153	90		
Feb. 1	59	165	130		
March 1	57	155	134		
April 1	55	125	62		
May 1	25	184	74		
June 1	85	168	78		
July 1	70	152	48		
Aug. 1	75	136	93		
Sept. 1	69	140	71		
Oct. 1	74	180	47		
Nov. 1	44	164	45		
Dec. 1	61	155	76		

Court/ Location	Lloydminster	Onion Lake	St. Walburg		
2013					
Jan. 1	66	154	42		
Feb. 1	57	152	34		
March 1	33	136	31		
April 1	45	106	36		
May 1	81	213	47		
June 1	78	197	65		
July 1	75	194	35		
Aug. 1	87	228	102		
Sept. 1	91	211	127		
Oct. 1	71	230	131		
Nov. 1	61	200	131		
Dec. 1	65	183	120		
2012					
Jan. 1	71	107	65		
Feb. 1	68	77	138		
March 1	41	184	130		
April 1	57	182	161		
May 1	50	228	151		
June 1	38	259	121		
July 1	25	272	133		
Aug. 1	26	242	103		
Sept. 1	54	226	73		
Oct. 1	99	196	43		
Nov. 1	87	166	94		
Dec. 1	70	136	64		

Number of Days to Next Available Trial Date – Meadow Lake Office

Court/ Location	Beauval	Big Island Lake	Buffalo Narrows	Buffalo River	Canoe Lake	English River
2015						
Jan. 1	164	69	228	152	249	83
Feb. 1	134	46	198	164	247	53
March 1	104	50	168	134	251	57
April 1	74	75	138	104	221	82
May 1	44	45	108	74	191	52
June 1	36	43	78	64	161	111
July 1	95	135	137	61	159	81
Aug. 1	65	127	169	45	129	86
Sept. 1	35	97	139	77	99	56
Oct. 1	47	74	136	75	103	53
Nov. 1	169	44	106	169	129	112
Dec. 1	139	75	139	139	133	111
2014						
Jan. 1	284	90	249	71	223	208
Feb. 1	288	129	254	48	220	178
March 1	286	106	224	45	190	237
April 1	256	111	194	36	160	207
May 1	260	94	253	33	220	177
June 1	230	98	223	72	190	174
July 1	284	68	193	90	187	165
Aug. 1	316	107	197	108	157	176
Sept. 1	286	77	167	78	127	146
Oct. 1	254	102	167	62	188	173
Nov. 1	224	72	199	52	193	143
Dec. 1	194	99	196	182	218	113

Court/ Location	Beauval	Big Island Lake	Buffalo Narrows	Buffalo River	Canoe Lake	English River
2013						
Jan. 1	134	48	196	99	128	140
Feb. 1	138	41	200	69	98	110
March 1	108	100	170	101	157	142
April 1	229	70	291	133	223	173
May 1	199	47	261	103	193	143
June 1	197	79	258	80	191	196
July 1	167	49	285	70	161	166
Aug. 1	137	67	290	109	165	204
Sept. 1	168	37	260	79	162	174
Oct. 1	168	103	230	104	189	144
Nov. 1	227	107	262	101	159	114
Dec. 1	292	77	259	94	157	238
2012						
Jan. 1	286	99	204	73	129	141
Feb. 1	256	69	174	43	99	111
March 1	226	39	144	130	158	81
April 1	196	37	168	100	217	202
May 1	220	69	166	97	249	172
June 1	190	39	136	67	219	142
July 1	160	63	140	126	189	112
Aug. 1	165	40	165	103	159	116
Sept. 1	169	10	199	128	159	128
Oct. 1	139	97	224	112	156	145
Nov. 1	139	74	194	109	133	115
Dec. 1	109	78	164	95	158	204

Number of Days to Next Available Trial Date – Meadow Lake Office (continued)

Court/ Location	Ile à la Crosse	La Loche	Loon Lake	Meadow Lake	Pierceland	Turnor Lake
2015						
Jan. 1	70	160	153	153	90	173
Feb. 1	86	179	137	137	122	178
March 1	70	149	114	121	92	148
April 1	67	146	125	145	62	172
May 1	39	143	95	143	32	142
June 1	98	141	65	127	64	112
July 1	87	159	152	117	34	144
Aug. 1	57	170	136	129	66	114
Sept. 1	34	153	153	106	36	84
Oct. 1	68	166	144	130	33	82
Nov. 1	99	177	143	163	31	176
Dec. 1	69	188	168	181	153	146
2014						
Jan. 1	311	243	141	209	126	112
Feb. 1	309	213	173	255	212	110
March 1	313	211	170	245	210	149
April 1	310	181	147	250	214	119
May 1	310	185	185	247	184	89
June 1	280	155	155	237	182	59
July 1	250	146	146	207	152	55
Aug. 1	220	171	198	198	122	136
Sept. 1	190	141	168	168	92	106
Oct. 1	160	175	154	145	62	144
Nov. 1	130	179	165	144	93	171
Dec. 1	100	170	170	163	120	203

Court/ Location	Ile à la Crosse	La Loche	Loon Lake	Meadow Lake	Pierceland	Turnor Lake
2013						
Jan. 1	161	155	107	142	216	141
Feb. 1	193	242	125	145	186	173
March 1	190	226	95	157	183	266
April 1	228	244	107	127	153	236
May 1	198	255	104	152	185	206
June 1	308	275	74	170	183	197
July 1	278	279	44	161	153	207
Aug. 1	283	263	158	172	157	178
Sept. 1	315	240	142	169	127	148
Oct. 1	312	231	139	175	97	145
Nov. 1	344	235	125	187	151	145
Dec. 1	307	239	171	198	156	142
2012						
Jan. 1	204	156	177	156	183	*
Feb. 1	174	126	147	126	153	*
March 1	144	124	117	116	123	*
April 1	189	169	135	121	154	*
May 1	207	167	139	119	124	145
June 1	177	178	109	109	94	143
July 1	147	169	141	86	181	113
Aug. 1	131	186	139	97	151	117
Sept. 1	142	234	223	95	155	142
Oct. 1	112	204	140	163	155	204
Nov. 1	116	215	110	181	180	201
Dec. 1	157	185	110	171	184	171

* Turnor Lake Circuit Point added May 2012

Number of Days to Next Available Trial Date – Melfort Office

Court/ Location	Carrot River	Hudson Bay	Melfort	Nipawin	Tisdale	Wakaw
2015						
Jan. 1	78	207	105	52	138	193
Feb. 1	75	177	158	60	170	163
March 1	80	147	142	79	153	133
April 1	70	144	112	74	123	130
May 1	68	114	102	67	120	127
June 1	52	84	154	49	139	159
July 1	56	143	166	61	122	157
Aug. 1	32	113	136	38	154	161
Sept. 1	37	145	140	77	151	158
Oct. 1	69	115	123	47	150	191
Nov. 1	39	85	129	86	168	161
Dec. 1	57	82	106	76	152	131
2014						
Jan. 1	65	173	141	85	125	132
Feb. 1	35	232	179	82	122	191
March 1	39	237	170	64	92	161
April 1	37	207	140	43	124	161
May 1	83	293	192	54	183	218
June 1	53	263	162	79	140	161
July 1	63	233	187	62	165	219
Aug. 1	164	294	171	60	246	281
Sept. 1	134	264	168	85	216	251
Oct. 1	104	297	138	103	186	221
Nov. 1	81	267	138	93	156	191
Dec. 1	108	237	135	82	168	223

Court/ Location	Carrot River	Hudson Bay	Melfort	Nipawin	Tisdale	Wakaw
2013						
Jan. 1	66	112	107	56	91	41
Feb. 1	36	144	91	42	110	41
March 1	33	114	95	65	93	73
April 1	17	112	114	64	91	98
May 1	35	116	124	89	95	68
June 1	19	113	122	80	92	72
July 1	10	83	99	84	62	63
Aug. 1	7	81	124	68	108	33
Sept. 1	11	147	121	105	167	133
Oct. 1	23	144	146	95	153	130
Nov. 1	13	233	139	79	150	130
Dec. 1	11	203	143	106	155	100
2012						
Jan. 1	31	115	25	44	36	99
Feb. 1	106	113	51	63	124	131
March 1	76	83	55	40	94	101
April 1	108	53	53	79	92	71
May 1	105	85	78	90	110	41
June 1	75	171	48	60	121	100
July 1	65	141	65	44	139	98
Aug. 1	63	171	49	14	109	68
Sept. 1	40	205	19	25	107	72
Oct. 1	65	175	79	9	77	42
Nov. 1	83	172	62	68	124	101
Dec. 1	70	142	137	79	121	71

Number of Days to Next Available Trial Date – Moose Jaw Office

Court/ Location	Assiniboia	Moose Jaw			
2015					
Jan. 1	133	157			
Feb. 1	248	129			
March 1	218	118			
April 1	221	116			
May 1	191	92			
June 1	189	91			
July 1	159	108			
Aug. 1	129	101			
Sept. 1	99	78			
Oct. 1	103	59			
Nov. 1	73	29			
Dec. 1	99	70			
2014					
Jan. 1	42	69			
Feb. 1	76	73			
March 1	67	107			
April 1	37	85			
May 1	41	75			
June 1	80	53			
July 1	105	118			
Aug. 1	75	156			
Sept. 1	45	126			
Oct. 1	42	111			
Nov. 1	193	100			
Dec. 1	163	105			

Court/ Location	Assiniboia	Moose Jaw			
2013					
Jan. 1	217	99			
Feb. 1	221	95			
March 1	191	51			
April 1	161	83			
May 1	35	76			
June 1	40	58			
July 1	161	110			
Aug. 1	80	158			
Sept. 1	128	50			
Oct. 1	98	27			
Nov. 1	68	66			
Dec. 1	38	83			
2012					
Jan. 1	121	129			
Feb. 1	125	133			
March 1	103	137			
April 1	128	119			
May 1	98	171			
June 1	68	120			
July 1	134	134			
Aug. 1	191	123			
Sept. 1	163	153			
Oct. 1	133	160			
Nov. 1	103	80			
Dec. 1	192	109			

Number of Days to Next Available Trial Date – North Battleford Office

Court/ Location	Biggar	Cut Knife	North Battleford	Pelican Lake	Spiritwood	Unity
2015						
Jan. 1	39	151	39	70	70	71
Feb. 1	121	121	65	53	53	89
March 1	271	91	51	127	127	200
April 1	241	123	33	117	117	170
May 1	211	182	52	101	101	195
June 1	181	180	58	97	97	200
July 1	*	*	*	*	*	*
Aug. 1	121	120	*	37	37	167
Sept. 1	125	124	64	111	111	137
Oct. 1	*	*	*	*	*	*
Nov. 1	121	91	36	112	112	140
Dec. 1	185	186	43	111	111	137
2014						
Jan. 1	181	241	96	221	221	289
Feb. 1	151	246	68	191	191	259
March 1	182	271	115	252	252	256
April 1	242	275	124	282	282	288
May 1	246	245	163	252	252	258
June 1	216	215	146	222	222	319
July 1	213	212	143	219	219	255
Aug. 1	183	182	135	162	162	168
Sept. 1	153	152	105	132	132	138
Oct. 1	123	122	77	103	103	115
Nov. 1	93	122	72	113	113	85
Dec. 1	63	154	56	99	99	101

* Data not available

Court/ Location	Biggar	Cut Knife	North Battleford	Pelican Lake	Spiritwood	Unity
2013						
Jan. 1	106	153	27	160	160	70
Feb. 1	76	212	24	130	130	287
March 1	60	182	37	129	129	257
April 1	38	152	69	99	99	227
May 1	96	124	110	136	136	211
June 1	107	94	126	127	127	188
July 1	105	64	124	98	98	158
Aug. 1	82	183	138	102	102	128
Sept. 1	52	153	125	99	99	98
Oct. 1	76	123	109	69	69	68
Nov. 1	67	123	107	74	74	41
Dec. 1	211	271	126	251	251	319
2012						
Jan. 1	183	92	100	72	100	249
Feb. 1	103	124	130	42	187	208
March 1	274	94	108	177	177	286
April 1	132	140	146	161	161	159
May 1	102	110	116	131	131	129
June 1	86	107	87	162	162	99
July 1	56	77	91	132	132	69
Aug. 1	26	61	63	102	102	74
Sept. 1	66	51	101	127	127	100
Oct. 1	155	154	78	131	131	144
Nov. 1	125	165	48	159	159	130
Dec. 1	136	135	57	164	164	100

Number of Days to Next Available Trial Date – Prince Albert Office

Court/ Location	Small Claims Hearings	Small Claims Case Management	Criminal Trials – Custody	Criminal Trials – Non- Custody	Criminal Trials – Two days or more
2015					
Jan. 1	80	72	109	80	80
Feb. 1	135	69	131	135	135
March 1	111	81	106	111	111
April 1	111	61	110	111	111
May 1	137	31	128	137	137
June 1	112	57	111	112	112
July 1	128	77	124	128	128
Aug. 1	107	79	106	107	107
Sept. 1	98	76	97	98	98
Oct. 1	95	60	93	95	95
Nov. 1	100	64	100	100	100
Dec. 1	112	68	112	112	112
2014					
Jan. 1	119	114	35	119	119
Feb. 1	115	98	111	115	115
March 1	108	95	91	108	108
April 1	105	114	103	105	105
May 1	97	115	114	115	115
June 1	111	87	121	111	111
July 1	124	57	95	124	124
Aug. 1	113	34	113	113	113
Sept. 1	112	39	105	112	112
Oct. 1	108	64	82	108	108
Nov. 1	106	102	91	106	106
Dec. 1	102	86	91	102	102

Court/ Location	Small Claims Hearings	Small Claims Case Management	Criminal Trials – Custody	Criminal Trials – Non- Custody	Criminal Trials – Two days or more
2013					
Jan. 1	141	101	56	141	141
Feb. 1	112	71	61	112	112
March 1	80	96	44	80	80
April 1	51	80	31	51	51
May 1	47	83	46	47	47
June 1	105	95	20	105	105
July 1	75	65	20	75	75
Aug. 1	*	*	*	*	*
Sept. 1	78	81	22	78	78
Oct. 1	55	99	29	55	55
Nov. 1	76	96	34	76	76
Dec. 1	102	117	46	102	46
2012					
Jan. 1	46	89	94	46	46
Feb. 1	35	86	64	35	35
March 1	42	84	83	42	42
April 1	115	67	80	115	115
May 1	123	79	50	123	123
June 1	136	49	20	136	136
July 1	*	*	*	*	*
Aug. 1	137	98	12	137	137
Sept. 1	121	82	17	121	121
Oct. 1	162	93	30	162	162
Nov. 1	*	*	*	*	*
Dec. 1	149	104	52	149	149

* Data not available

Number of Days to Next Available Trial Date – Prince Albert Office (continued)

Court/ Location	Youth Court Trials – Non- Custody	Youth Court Trials - Custody	Ahtahkakoop First Nation	Pelican Narrows	Sandy Bay
2015					
Jan. 1	80	109	159	63	202
Feb. 1	135	131	129	33	172
March 1	111	106	99	37	169
April 1	111	110	104	62	139
May 1	137	128	74	108	171
June 1	112	111	71	111	196
July 1	128	124	75	109	166
Aug. 1	107	106	128	107	107
Sept. 1	98	97	132	104	167
Oct. 1	95	93	102	75	200
Nov. 1	100	100	99	65	198
Dec. 1	112	112	132	62	168
2014					
Jan. 1	119	35	105	112	216
Feb. 1	115	111	103	96	199
March 1	108	91	100	106	194
April 1	105	103	105	98	164
May 1	115	114	75	85	158
June 1	111	121	72	51	197
July 1	124	95	69	111	201
Aug. 1	113	113	101	81	262
Sept. 1	112	105	133	78	232
Oct. 1	108	82	160	75	257
Nov. 1	106	91	190	107	262
Dec. 1	102	91	162	77	232

Court/ Location	Youth Court Trials – Non- Custody	Youth Court Trials - Custody	Ahtahkakoop First Nation	Pelican Narrows	Sandy Bay
2013					
Jan. 1	141	56	161	154	155
Feb. 1	112	61	131	138	125
March 1	80	44	129	135	123
April 1	51	31	99	105	127
May 1	47	46	103	76	124
June 1	105	20	100	141	218
July 1	75	20	70	111	188
Aug. 1	*	*	*	*	*
Sept. 1	78	22	134	79	155
Oct. 1	55	29	131	76	125
Nov. 1	76	34	101	108	125
Dec. 1	102	46	101	141	246
2012					
Jan. 1	46	94	73	37	108
Feb. 1	35	64	43	63	99
March 1	42	83	13	109	124
April 1	115	80	100	79	94
May 1	123	50	70	111	64
June 1	136	20	74	81	68
July 1	*	*	*	*	*
Aug. 1	137	12	131	76	8
Sept. 1	121	17	135	107	33
Oct. 1	162	30	105	78	3
Nov. 1	*	*	*	*	*
Dec. 1	149	52	164	184	185

* Data not available

Number of Days to Next Available Trial Date – Prince Albert Office (continued)

Court/ Location	Whitefish First Nation	Big River	Montreal Lake	Shellbrook	
2015					
Jan. 1	195	95	126	151	
Feb. 1	192	65	123	156	
March 1	162	35	135	153	
April 1	166	95	105	185	
May 1	164	65	75	182	
June 1	134	103	45	180	
July 1	104	121	138	150	
Aug. 1	163	91	156	181	
Sept. 1	160	61	140	180	
Oct. 1	166	93	110	184	
Nov. 1	136	63	136	182	
Dec. 1	161	60	154	186	
2014					
Jan. 1	134	186	106	90	
Feb. 1	104	156	90	122	
March 1	136	126	94	154	
April 1	160	96	64	151	
May 1	192	182	110	156	
June 1	224	180	114	153	
July 1	194	184	125	151	
Aug. 1	221	154	95	121	
Sept. 1	191	215	93	152	
Oct. 1	182	185	124	152	
Nov. 1	193	155	108	184	
Dec. 1	163	125	108	181	

Court/ Location	Whitefish First Nation	Big River	Montreal Lake	Shellbrook	
2013					
Jan. 1	224	152	169	140	
Feb. 1	194	122	153	110	
March 1	191	161	164	80	
April 1	161	139	134	91	
May 1	131	122	152	61	
June 1	163	92	184	106	
July 1	133	62	154	76	
Aug. 1	*	*	*	*	
Sept. 1	101	152	121	140	
Oct. 1	105	122	105	137	
Nov. 1	102	156	109	123	
Dec. 1	102	216	109	120	
2012					
Jan. 1	196	249	60	50	
Feb. 1	161	219	92	76	
March 1	131	210	96	94	
April 1	101	180	108	64	
May 1	132	246	91	137	
June 1	137	216	137	121	
July 1	*	*	*	*	
Aug. 1	180	180	139	95	
Sept. 1	136	272	201	79	
Oct. 1	106	124	183	104	
Nov. 1	*	*	*	*	
Dec. 1	165	125	165	125	

* Data not available

Number of Days to Next Available Trial Date – Regina Office

Court/ Location	Traffic Safety Court Trials	Small Claims Hearings	Small Claims Case Mgmt	Criminal Trials – Non- Custody	Criminal Trials – Custody	Criminal Trials – 2 days/more
2015						
Jan. 1	150	39	72	112	54	102
Feb. 1	148	65	76	136	65	127
March 1	126	65	74	114	63	104
April 1	124	68	70	136	67	149
May 1	94	79	62	121	99	127
June 1	120	91	59	112	83	97
July 1	123	123	50	111	80	80
Aug. 1	134	119	75	115	50	153
Sept. 1	123	96	72	98	48	82
Oct. 1	135	93	76	93	59	93
Nov. 1	153	142	88	111	77	90
Dec. 1	139	139	84	103	60	137
2014						
Jan. 1	189	69	42	85	62	119
Feb. 1	173	95	56	115	53	135
March 1	170	98	60	108	64	105
April 1	167	105	51	151	55	157
May 1	176	121	55	155	46	155
June 1	167	91	59	139	58	146
July 1	185	90	77	131	67	111
Aug. 1	169	92	89	113	65	81
Sept. 1	166	76	79	106	63	76
Oct. 1	166	48	64	102	54	121
Nov. 1	158	58	75	98	71	100
Dec. 1	156	41	79	101	68	98

Court/ Location	Traffic Safety Court Trials	Small Claims Hearings	Small Claims Case Mgmt	Criminal Trials – Non- Custody	Criminal Trials – Custody	Criminal Trials – 2 days/more
2013						
Jan. 1	209	168	50	71	41	65
Feb. 1	221	198	57	91	40	90
March 1	218	183	61	92	44	72
April 1	201	200	59	77	35	42
May 1	204	183	49	103	33	53
June 1	215	190	48	112	23	112
July 1	233	186	51	111	50	82
Aug. 1	229	169	55	114	46	54
Sept. 1	239	141	53	107	71	77
Oct. 1	224	123	43	95	61	75
Nov. 1	212	122	42	122	65	66
Dec. 1	191	113	53	99	56	147
2012						
Jan. 1	177	169	37	120	29	65
Feb. 1	187	199	69	125	27	41
March 1	177	190	68	95	20	45
April 1	182	181	53	101	29	180
May 1	198	164	50	102	27	150
June 1	196	169	54	134	24	122
July 1	222	152	45	106	22	104
Aug. 1	214	184	56	103	19	75
Sept. 1	225	168	53	85	30	46
Oct. 1	218	161	64	78	21	76
Nov. 1	212	164	74	61	66	75
Dec. 1	213	162	65	85	57	93

Number of Days to Next Available Trial Date – Regina Office (continued)

Court/ Location	Youth Court Trials – Non- Custody	Youth Court Trials – Custody	Fort Qu’Appelle	Indian Head	Southey	
2015						
Jan. 1	48	40	52	89	187	
Feb. 1	40	39	38	66	191	
March 1	66	50	52	50	161	
April 1	42	46	60	41	158	
May 1	46	45	99	31	135	
June 1	37	31	103	36	174	
July 1	68	27	73	33	144	
Aug. 1	38	37	50	58	114	
Sept. 1	83	48	85	49	132	
Oct. 1	61	48	66	94	102	
Nov. 1	66	44	50	71	128	
Dec. 1	75	41	43	68	98	
2014						
Jan. 1	49	47	76	77	133	
Feb. 1	35	25	73	88	103	
March 1	44	30	50	72	73	
April 1	49	36	34	76	132	
May 1	47	46	38	74	102	
June 1	51	44	53	78	99	
July 1	69	49	54	61	97	
Aug. 1	39	19	24	107	129	
Sept. 1	65	52	49	125	99	
Oct. 1	49	47	67	95	130	
Nov. 1	40	38	37	92	130	
Dec. 1	69	63	82	119	217	

Court/ Location	Youth Court Trials – Non- Custody	Youth Court Trials – Custody	Carry the Kettle FN	Fort Qu'Appelle	Indian Head	Southey
2013						
Jan. 1	36	34	71	118	119	189
Feb. 1	35	34	130	153	151	193
March 1	32	31	128	137	135	39
April 1	24	23	132	134	139	167
May 1	4	13	157	142	136	158
June 1	32	31	*	126	120	162
July 1	43	22	*	119	118	153
Aug. 1	20	14	*	121	122	137
Sept. 1	32	30	*	128	99	127
Oct. 1	49	42	*	105	96	131
Nov. 1	40	39	*	92	100	131
Dec. 1	77	37	*	86	77	128
2012						
Jan. 1	16	29	43	105	65	37
Feb. 1	37	20	42	126	90	98
March 1	41	32	39	131	74	68
April 1	17	16	71	115	78	100
May 1	36	41	69	112	123	131
June 1	33	32	73	123	93	101
July 1	24	23	43	134	119	71
Aug. 1	14	13	102	166	123	158
Sept. 1	38	17	72	136	93	128
Oct. 1	43	56	97	117	77	162
Nov. 1	35	67	67	133	88	132
Dec. 1	31	64	37	120	78	219

* Court moved from Carry the Kettle First Nation to Indian Head effective June 2013 due to facility issues

Number of Days to Next Available Trial Date – Saskatoon Office

Court/ Location	Traffic Safety Court Trials	Small Claims Hearings	Small Claims Case Management	Criminal Trials – Custody	Criminal Trials – Non- Custody
2015					
Jan. 1	230	104	68	112	125
Feb. 1	220	102	65	120	129
March 1	208	99	84	118	121
April 1	186	118	136	91	118
May 1	191	116	147	119	147
June 1	182	97	165	89	148
July 1	199	123	149	94	128
Aug. 1	211	108	121	101	126
Sept. 1	210	106	123	110	138
Oct. 1	208	108	107	127	137
Nov. 1	204	78	97	142	147
Dec. 1	180	98	103	137	137
2014					
Jan. 1	286	96	91	70	151
Feb. 1	275	76	75	142	156
March 1	270	101	73	112	133
April 1	247	91	75	82	126
May 1	228	134	100	76	121
June 1	242	120	104	59	147
July 1	229	152	97	62	171
Aug. 1	249	141	88	69	141
Sept. 1	259	111	78	87	167
Oct. 1	263	104	69	81	137
Nov. 1	253	101	78	85	137
Dec. 1	233	106	55	91	133

Court/ Location	Traffic Safety Court Trials	Small Claims Hearings	Small Claims Case Management	Criminal Trials – Custody	Criminal Trials – Non- Custody
2013					
Jan. 1	284	54	54	127	161
Feb. 1	308	49	56	110	180
March 1	286	37	53	106	184
April 1	290	36	51	119	175
May 1	288	53	55	90	191
June 1	265	108	80	100	163
July 1	243	89	82	144	151
Aug. 1	239	66	66	123	138
Sept. 1	253	51	65	112	146
Oct. 1	256	22	63	102	166
Nov. 1	263	45	65	107	159
Dec. 1	267	116	108	94	143
2012					
Jan. 1	183	35	66	112	153
Feb. 1	192	56	63	111	140
March 1	214	61	68	128	145
April 1	231	37	65	105	153
May 1	242	40	54	75	158
June 1	233	55	79	61	154
July 1	251	90	90	65	152
Aug. 1	258	74	83	108	149
Sept. 1	272	64	80	122	160
Oct. 1	278	42	62	138	156
Nov. 1	271	42	68	126	153
Dec. 1	287	52	52	114	148

Number of Days to Next Available Trial Date – Saskatoon Office (continued)

Court/ Location	Criminal Trials – 2 Days or More	Youth Court Trials – Custody	Youth Court Trials – Non- Custody	Beardy's & Okemasis FN	Blaine Lake
2015					
Jan. 1	131	61	76	104	153
Feb. 1	134	55	65	109	123
March 1	141	35	66	92	182
April 1	151	67	70	124	214
May 1	147	58	61	94	184
June 1	158	28	31	64	182
July 1	128	33	59	34	152
Aug. 1	126	38	98	66	122
Sept. 1	138	69	89	36	126
Oct. 1	156	61	80	75	96
Nov. 1	147	63	72	45	66
Dec. 1	137	33	76	76	92
2014					
Jan. 1	151	53	54	105	120
Feb. 1	156	76	24	75	90
March 1	142	38	58	45	211
April 1	171	28	50	105	215
May 1	196	20	54	75	185
June 1	189	31	36	45	183
July 1	171	35	48	49	153
Aug. 1	141	61	80	79	123
Sept. 1	188	56	71	106	184
Oct. 1	158	42	56	76	154
Nov. 1	144	26	47	66	151
Dec. 1	141	64	70	36	121

Court/ Location	Criminal Trials – 2 Days or More	Youth Court Trials – Custody	Youth Court Trials – Non- Custody	Beardy's & Okemasis FN	Blaine Lake
2013					
Jan. 1	201	34	49	65	66
Feb. 1	185	19	50	62	153
March 1	204	20	33	74	137
April 1	187	64	86	64	107
May 1	191	63	75	62	77
June 1	195	33	51	46	47
July 1	228	28	51	16	17
Aug. 1	233	34	55	31	108
Sept. 1	209	25	80	31	121
Oct. 1	195	62	64	49	155
Nov. 1	171	53	65	94	125
Dec. 1	169	45	52	94	150
2012					
Jan. 1	174	52	98	107	136
Feb. 1	173	22	89	77	168
March 1	198	38	74	47	138
April 1	181	63	63	17	121
May 1	184	75	43	13	91
June 1	168	13	27	47	185
July 1	166	39	36	17	155
Aug. 1	151	22	70	62	125
Sept. 1	160	99	121	32	95
Oct. 1	180	97	106	16	106
Nov. 1	165	94	100	20	126
Dec. 1	182	64	70	18	96

Number of Days to Next Available Trial Date – Saskatoon Office (continued)

Court/ Location	Humboldt	Kindersley	Outlook	Rosetown	Rosthern	Watrous
2015						
Jan. 1	150	213	277	83	111	140
Feb. 1	127	224	247	53	143	110
March 1	97	256	217	43	113	80
April 1	67	240	187	*	156	166
May 1	65	224	157	73	204	136
June 1	42	201	189	43	188	168
July 1	115	225	159	27	172	166
Aug. 1	85	217	129	141	162	136
Sept. 1	75	221	99	111	159	106
Oct. 1	114	205	193	81	129	137
Nov. 1	97	196	163	98	113	107
Dec. 1	67	166	133	97	83	77
2014						
Jan. 1	145	173	189	173	105	134
Feb. 1	156	178	159	143	144	138
March 1	167	154	190	113	128	108
April 1	144	158	160	193	112	78
May 1	141	177	130	163	171	48
June 1	111	195	162	133	141	169
July 1	129	199	132	172	111	139
Aug. 1	168	233	283	142	129	164
Sept. 1	151	251	280	173	160	134
Oct. 1	121	255	250	143	130	104
Nov. 1	155	253	309	113	171	74
Dec. 1	125	223	279	83	141	135

* Data not available

Court/ Location	Humboldt	Kindersley	Outlook	Rosetown	Rosthern	Watrous
2013						
Jan. 1	153	112	73	160	113	70
Feb. 1	225	89	98	172	83	40
March 1	216	100	68	142	67	37
April 1	186	132	72	112	99	7
May 1	156	129	70	82	87	81
June 1	126	161	40	127	114	51
July 1	119	138	10	168	84	21
Aug. 1	122	137	131	163	130	38
Sept. 1	125	140	128	147	127	22
Oct. 1	95	117	162	130	97	105
Nov. 1	72	157	132	219	131	194
Dec. 1	69	170	157	203	128	164
2012						
Jan. 1	346	182	114	223	217	202
Feb. 1	316	152	133	207	236	172
March 1	286	170	103	177	205	142
April 1	256	147	87	174	175	132
May 1	273	151	57	206	159	102
June 1	243	121	68	176	143	113
July 1	213	146	100	201	133	145
Aug. 1	183	116	70	191	103	129
Sept. 1	153	93	40	267	73	99
Oct. 1	123	118	10	237	43	117
Nov. 1	179	138	133	220	132	87
Dec. 1	149	121	103	190	129	57

Number of Days to Next Available Trial Date – Swift Current Office

Court/ Location	Leader	Maple Creek	Shaunavon	Swift Current	
2015					
Jan. 1	78	41	64	38	
Feb. 1	48	103	73	39	
March 1	169	73	66	37	
April 1	166	43	91	77	
May 1	136	102	122	74	
June 1	106	161	92	57	
July 1	76	131	35	*	
Aug. 1	46	101	32	*	
Sept. 1	78	71	37	56	
Oct. 1	166	69	96	95	
Nov. 1	136	39	66	127	
Dec. 1	106	99	92	111	
2014					
Jan. 1	196	127	182	69	
Feb. 1	166	97	152	54	
March 1	136	67	122	105	
April 1	106	37	153	98	
May 1	76	158	123	73	
June 1	46	128	93	58	
July 1	139	160	125	41	
Aug. 1	109	130	95	73	
Sept. 1	79	100	154	76	
Oct. 1	49	70	124	49	
Nov. 1	138	40	94	80	
Dec. 1	108	37	94	55	

* Data not available

Court/ Location	Leader	Maple Creek	Shaunavon	Swift Current	
2013					
Jan. 1	135	43	121	40	
Feb. 1	105	13	153	10	
March 1	198	68	184	38	
April 1	168	38	216	28	
May 1	200	42	186	32	
June 1	225	67	156	24	
July 1	195	37	126	23	
Aug. 1	165	131	151	33	
Sept. 1	135	128	185	38	
Oct. 1	105	98	155	41	
Nov. 1	75	68	125	31	
Dec. 1	164	129	150	83	
2012					
Jan. 1	74	101	60	22	
Feb. 1	168	71	30	41	
March 1	138	41	62	47	
April 1	108	39	32	22	
May 1	139	43	36	68	
June 1	109	68	95	60	
July 1	79	100	182	90	
Aug. 1	166	70	152	60	
Sept. 1	136	40	122	64	
Oct. 1	106	72	156	83	
Nov. 1	76	69	126	81	
Dec. 1	46	39	96	51	

Number of Days to Next Available Trial Date – Wynyard Office

Court/ Location	Punnichy	Rose Valley	Wadena	Wynyard	
2015					
Jan. 1	96	104	48	55	
Feb. 1	66	122	48	206	
March 1	126	127	86	176	
April 1	117	97	50	146	
May 1	114	101	61	116	
June 1	111	78	31	113	
July 1	81	68	76	83	
Aug. 1	79	38	46	53	
Sept. 1	49	98	30	85	
Oct. 1	74	95	48	55	
Nov. 1	91	99	66	87	
Dec. 1	82	98	36	84	
2014					
Jan. 1	40	41	49	56	
Feb. 1	33	61	35	83	
March 1	30	45	46	53	
April 1	35	50	30	51	
May 1	46	61	48	83	
June 1	71	65	32	114	
July 1	55	42	36	84	
Aug. 1	66	32	123	82	
Sept. 1	50	140	93	52	
Oct. 1	54	130	104	56	
Nov. 1	79	100	74	115	
Dec. 1	62	134	78	85	

Court/ Location	Punnichy	Rose Valley	Wadena	Wynyard	
2013					
Jan. 1	48	15	66	87	
Feb. 1	34	42	36	84	
March 1	100	32	47	82	
April 1	70	37	65	86	
May 1	61	34	35	84	
June 1	31	39	33	115	
July 1	42	43	64	85	
Aug. 1	60	40	76	83	
Sept. 1	78	72	94	87	
Oct. 1	62	63	64	57	
Nov. 1	46	33	61	82	
Dec. 1	36	71	31	86	
2012					
Jan. 1	65	93	74	115	
Feb. 1	35	63	92	85	
March 1	53	47	62	54	
April 1	23	17	32	25	
May 1	41	63	50	85	
June 1	46	33	20	55	
July 1	77	78	45	52	
Aug. 1	47	48	15	84	
Sept. 1	45	66	122	106	
Oct. 1	22	36	92	96	
Nov. 1	26	13	62	117	
Dec. 1	64	31	32	87	

Number of Days to Next Available Trial Date – Yorkton Office

Court/ Location	Broadview	Canora	Esterhazy	Kamsack	Melville	Moosomin	Yorkton
2015							
Jan. 1	125	105	103	104	123	124	138
Feb. 1	109	96	73	122	93	94	151
March 1	113	169	133	127	111	64	169
April 1	124	139	130	97	112	96	171
May 1	101	136	100	109	106	134	150
June 1	91	151	146	110	110	104	152
July 1	61	166	157	150	94	95	172
Aug. 1	87	170	141	120	98	134	214
Sept. 1	84	140	112	104	96	138	209
Oct. 1	82	110	110	115	93	108	213
Nov. 1	65	143	51	113	63	105	191
Dec. 1	35	153	68	153	54	75	181
2014							
Jan. 1	98	92	132	91	158	154	152
Feb. 1	123	62	143	103	142	159	151
March 1	114	39	127	74	126	129	156
April 1	125	126	133	125	110	133	152
May 1	95	151	123	150	134	123	122
June 1	99	162	128	161	146	142	120
July 1	131	153	139	167	139	139	151
Aug. 1	101	123	109	137	109	109	121
Sept. 1	126	127	146	140	124	105	125
Oct. 1	130	145	131	137	81	95	97
Nov. 1	130	124	129	130	78	92	92
Dec. 1	155	115	133	115	125	126	155

Court/ Location	Broadview	Canora	Esterhazy	Kamsack	Melville	Moosomin	Yorkton
2013							
Jan. 1	154	121	209	85	173	209	160
Feb. 1	131	81	68	26	74	137	160
March 1	108	123	102	67	92	184	164
April 1	113	120	134	79	154	168	134
May 1	83	90	159	84	104	159	122
June 1	66	115	170	93	149	129	135
July 1	84	92	159	106	192	186	145
Aug. 1	54	62	129	109	172	156	136
Sept. 1	127	32	190	101	196	153	141
Oct. 1	124	64	160	77	129	123	139
Nov. 1	124	34	144	48	132	137	138
Dec. 1	115	31	141	115	140	150	164
2012							
Jan. 1	80	94	141	121	112	154	108
Feb. 1	60	106	131	112	103	166	135
March 1	102	110	101	95	100	145	131
April 1	107	140	115	84	70	126	126
May 1	111	139	167	62	75	165	158
June 1	115	130	171	53	79	155	143
July 1	113	100	155	77	90	125	113
Aug. 1	131	104	166	111	129	109	116
Sept. 1	121	106	161	101	140	107	121
Oct. 1	91	113	92	112	167	104	131
Nov. 1	110	83	110	109	185	47	125
Dec. 1	171	110	218	87	182	206	135

Justice Automated Information Network (JAIN)

The Justice Automated Information Network (JAIN) is a database used by the Provincial Court to track court appearances and dispositions with respect to criminal and provincial statute offences. The chart below indicates the number of charges appearing before Provincial Court judges in a given year. This could include the same charge on multiple occasions, as it works its way through the system.

Justice Automated Information Network Statistics – 10-Year Snapshot

Court Centre	2006	2007	2008	2009	2010	2011	2012	2013	2014	2015
Estevan	10629	11442	11651	14517	20103	25052	26647	25655	24753	25246
La Ronge	24671	23862	22144	20664	22493	21585	25168	29545	28714	27853
Lloydminster	12247	13305	15452	17431	18224	24618	23077	22495	24607	23655
Meadow Lake	36241	47167	50909	49399	46974	44070	51559	53884	49232	43011
Melfort	20236	25788	22229	21696	21179	22102	18497	17433	19268	19831
Moose Jaw	23966	23814	23544	30554	30813	32502	31278	33496	30998	36677
North Battleford	36623	34909	34230	31495	44953	50320	45970	38715	37986	43231
Prince Albert	71041	75964	83172	84044	88845	87259	91682	99249	108722	118149
Regina	179617	197637	214555	228625	220209	213213	230210	218794	204694	242953
Saskatoon	190550	210140	201989	203287	209435	202045	222419	220879	235504	296129
Swift Current	9284	9983	11209	11773	13377	11009	11200	14148	14258	13793
Wynyard	10236	8863	7820	10337	12397	12094	11482	10409	12761	16729
Yorkton	24170	24257	31455	31983	31680	33868	34764	34100	35067	30182
TOTAL	649511	707131	730359	755805	780682	779737	823953	818802	826564	937439

Video Conferencing Usage

The Provincial Court uses video conferencing technology at many of its locations, including circuit points. Video conferencing technology is useful in many ways: it improves access in northern communities, reduces adjournments and delays caused by poor weather, reduces the need for prisoner transport, and provides another method by which children and other vulnerable victims can give evidence.

Video Conferencing Usage Statistics for Estevan Court Office

	2015	2014	2013	2012
Carlyle				
<i>Video Appearances</i>	12	3	-	-
<i>Charges Addressed</i>	86	27	-	-
Estevan				
<i>Video Appearances</i>	33	16	-	-
<i>Charges Addressed</i>	120	71	-	-

Video Conferencing Usage Statistics for La Ronge Court Office

	2015	2014	2013	2012
Creighton				
<i>Video Appearances</i>	199	64	20	0
<i>Charges Addressed</i>	808	432	114	0
Cumberland House				
<i>Video Appearances</i>	53	34	-	-
<i>Charges Addressed</i>	159	135	-	-
Deschambault Lake				
<i>Video Appearances</i>	2	-	-	-
<i>Charges Addressed</i>	8	-	-	-
La Ronge				
<i>Video Appearances</i>	19	6	-	-
<i>Charges Addressed</i>	118	16	-	-
Southend				
<i>Video Appearances</i>	34	8	30	-
<i>Charges Addressed</i>	124	37	83	-

Video Conferencing Usage Statistics for Lloydminster Court Office

	2015	2014	2013	2012
Lloydminster				
<i>Video Appearances</i>	91	114	120	121
<i>Charges Addressed</i>	1155	1207	883	953
Onion Lake				
<i>Video Appearances</i>	11	-	-	-
<i>Charges Addressed</i>	71	-	-	-

Video Conferencing Usage Statistics for Meadow Lake Court Office

	2015	2014	2013	2012
Buffalo Narrows				
<i>Video Appearances</i>	419	439	549	32
<i>Charges Addressed</i>	1226	1531	1718	161
Ile à la Crosse				
<i>Video Appearances</i>	464	508	592	1
<i>Charges Addressed</i>	1569	1696	2168	3
La Loche				
<i>Video Appearances</i>	2232	2476	2413	1000
<i>Charges Addressed</i>	9948	11414	11269	4207
Meadow Lake				
<i>Video Appearances</i>	104	78	189	158
<i>Charges Addressed</i>	1065	683	1487	1194

Video Conferencing Usage Statistics for Melfort Court Office

	2015	2014	2013	2012
Carrot River				
<i>Video Appearances</i>	4	18	1	0
<i>Charges Addressed</i>	40	68	3	0
Melfort				
<i>Video Appearances</i>	25	35	8	5
<i>Charges Addressed</i>	164	242	47	29
Nipawin				
<i>Video Appearances</i>	12	55	2	1
<i>Charges Addressed</i>	86	149	18	3

Video Conferencing Usage Statistics for Moose Jaw Court Office

	2015	2014	2013	2012
Moose Jaw				
<i>Video Appearances</i>	57	52	37	1
<i>Charges Addressed</i>	448	515	432	5

Video Conferencing Usage Statistics for North Battleford Court Office

	2015	2014	2013	2012
North Battleford				
<i>Video Appearances</i>	343	278	292	343
<i>Charges Addressed</i>	2530	1954	2510	2848

Video Conferencing Usage Statistics for Prince Albert Court Office

	2015	2014	2013	2012
Pelican Narrows				
<i>Video Appearances</i>	670	590	-	-
<i>Charges Addressed</i>	2545	2381	-	-
Prince Albert				
<i>Video Appearances</i>	757	602	636	444
<i>Charges Addressed</i>	4382	3211	2598	1539
Sandy Bay				
<i>Video Appearances</i>	19	-	-	-
<i>Charges Addressed</i>	130	-	-	-

Video Conferencing Usage Statistics for Regina Court Office

	2015	2014	2013	2012
Fort Qu'Appelle				
<i>Video Appearances</i>	66	82	99	65
<i>Charges Addressed</i>	658	852	527	343
Regina				
<i>Video Appearances</i>	3697	2661	2915	2978
<i>Charges Addressed</i>	33235	19126	23921	26383

Video Conferencing Usage Statistics for Saskatoon Court Office

	2015	2014	2013	2012
Saskatoon				
<i>Video Appearances</i>	3326	1794	1501	1592
<i>Charges Addressed</i>	28010	13257	11219	10296

Video Conferencing Usage Statistics for Swift Current Court Office

	2015	2014	2013	2012
Swift Current				
<i>Video Appearances</i>	80	72	6	10
<i>Charges Addressed</i>	585	531	89	198

Video Conferencing Usage Statistics for Wynyard Court Office

	2015	2014	2013	2012
Punnichy				
<i>Video Appearances</i>	61	43	31	0
<i>Charges Addressed</i>	528	238	372	0
Rose Valley				
<i>Video Appearances</i>	38	15	-	-
<i>Charges Addressed</i>	252	152	-	-
Wynyard				
<i>Video Appearances</i>	19	8	1	-
<i>Charges Addressed</i>	168	70	9	-

Video Conferencing Usage Statistics for Yorkton Court Office

	2015	2014	2013	2012
Broadview				
<i>Video Appearances</i>	16	5	-	-
<i>Charges Addressed</i>	98	22	-	-
Kamsack				
<i>Video Appearances</i>	47	19	28	24
<i>Charges Addressed</i>	408	123	136	121
Yorkton				
<i>Video Appearances</i>	136	155	104	76
<i>Charges Addressed</i>	1162	1094	708	549

Appendix A – Judges of the Provincial Court of Saskatchewan in the years 2014 and 2015

Judge	Court Location	Appointed
Chief Judge J. A. Plemel		Oct. 14, 2009
Associate Chief Judge M. J. Hinds	Regina	Feb. 1, 2007
Judge Q. D. Agnew	Saskatoon	Jan. 7, 2009
Judge S. Anand	Saskatoon	Oct. 16, 2014
Judge M. M. Baniak	Saskatoon	May 6, 2010
Judge B. Bauer	North Battleford	July 17, 2014
Judge K. P. Bazin	Swift Current	March 11, 2011
Judge M. T. Beaton ¹	Regina	March 17, 2009
Judge D. J. Bird	Meadow Lake	May 9, 2006
Judge I. J. Cardinal	Melfort	March 5, 2012
Judge S. C. Carter (retired April 2014)	Prince Albert	Feb. 8, 1995
Judge A. M. Crugnale-Reid	Regina	April 30, 2002
Judge F. M. A. L. Daunt	Prince Albert	Sept. 11, 2007
Judge P. Demong	Regina	Dec. 14, 2012
Judge L. D. Dyck	North Battleford	April 5, 2005
Judge V. Monar Enweani	Saskatoon	July 23, 2015
Judge M. Gordon	Moose Jaw	Sept. 11, 2007

Judge	Court Location	Appointed
Judge M. Gray	Saskatoon	Dec. 12, 2006
Judge R. Green	Yorkton	March 3, 2004
Judge L. A. Halliday	Regina	Sept. 28, 1994
Judge H. M. Harradence ²	Prince Albert	Dec. 12, 2006
Judge B. D. Henning ³	Regina	Feb. 15, 1978
Judge M. D. Irwin (retired April 2014)	Saskatoon	March 11, 1998
Judge R. D. Jackson	Saskatoon	Jan. 24, 2001
Judge D. J. Kaiser (retired July 2014)	North Battleford	July 24, 1996
Judge E. Kalenith	Prince Albert	Aug. 29, 2001
Judge J. Kalmakoff (appointed QB June 2015)	Regina	Oct. 14, 2009
Judge B. M. Klause	Saskatoon	Nov. 26, 2008
Judge P. S. Kolenick	Saskatoon	July 10, 1996
Judge P. R. Koskie	Yorkton	Dec. 21, 2004
Judge D. J. Kovatch	Moose Jaw	Dec. 13, 2005
Judge D. E. Labach (appointed QB June 2015)	Saskatoon	March 17, 2009
Judge R. Lane	La Ronge	Sept. 28, 2012
Judge K.A. Lang	Regina	Feb. 28, 2013
Judge D. A. Lavoie	Saskatoon	Dec. 21, 1988
Judge S. D. Loewen	Prince Albert	June 29, 2007

Judge	Court Location	Appointed
Judge M. Marquette	Wynyard	Dec. 18, 2014
Judge M. Martinez	Meadow Lake	Feb. 27, 2014
Judge L. A. Matsalla (retired April 2014)	Swift Current	Dec. 12, 1995
Judge J. McIvor	Meadow Lake	Feb. 13, 2014
Judge S. Metivier	Saskatoon	April 18, 2013
Judge B. G. Morgan ⁴	Saskatoon	Dec. 13, 2005
Judge G. M. Morin	Prince Albert	Jan. 24, 2001
Judge D. J. O'Hanlon ⁵	North Battleford	May 4, 2004
Judge. P. A. Reis	Yorkton	Nov. 29, 2013
Judge S. I. Robinson	La Ronge	March 7, 2000
Judge J. Rybchuk	Melfort	April 26, 2013
Judge S. Schiefner	Prince Albert	Nov. 12, 2015
Judge D. C. Scott	Saskatoon	April 24, 2007
Judge B. M. Singer	Saskatoon	May 8, 2002
Judge C. A. Snell	Regina	March 10, 1999
Judge B. J. Tomkins	Regina	Dec. 16, 2009
Judge S. P. Whelan (retired August 2014)	Saskatoon	July 24, 1996
Judge L. Wieggers	Estevan	March 27, 2014
Judge B. Wright	Saskatoon	March 27, 2014

Judge	Court Location	Appointed
Judge K. J. Young	Lloydminster	Oct. 1, 1986

1. Administrative Judge, Regina
2. Administrative Judge, Prince Albert
3. Administrative Judge, Facilities and Security
4. Administrative Judge, Saskatoon
5. Administrative Judge, Northwest

Appendix B – Court Locations

A

Ahtahkakoop First Nation Circuit Point
Post-Secondary Building
Ahtahkakoop First Nation Reserve, SK
Registry Office: Prince Albert

Assiniboia Circuit Point
Prince of Wales Cultural & Recreational
Centre
201 3rd Avenue West
Assiniboia, SK
Registry Office: Moose Jaw

B

**Beardy's and Okemasis First Nation
Circuit Point**
Beardy's Justice Building
Beardy's & Okemasis First Nation Reserve,
SK
Registry Office: Saskatoon

Beauval Circuit Point
St. Mary Magdalene Catholic Church
Beaver Avenue
Beauval, SK
Registry Office: Meadow Lake

Big Island Lake Cree Territory Circuit Point
Band Hall
Big Island Lake Cree Nation, SK
Registry Office: Meadow Lake

Big River Circuit Point
Legion Hall
205 Main Street
Registry Office: Prince Albert

Biggar Circuit Point
Community Hall
319 1st Avenue East
Biggar, SK
Registry Office: North Battleford

Black Lake Circuit Point
Band Hall
118 Allsaints Street
Black Lake, SK
Registry Office: La Ronge

Blaine Lake Circuit Point ¹
Blaine Lake Curling Club
2nd Floor, 218 2nd Avenue East
Blaine Lake, SK
Registry Office: Saskatoon

Broadview Circuit Point
Community Hall
715 Main Street
Broadview, SK
Registry Office: Yorkton

Buffalo Narrows Circuit Point
Provincial Building
310 Davy Street
Buffalo Narrows, SK
Registry Office: Meadow Lake

Buffalo River First Nation Circuit Point
Band Hall
Buffalo River Dene Nation Reserve, SK
Registry Office: Meadow Lake

C

Canoe Lake Circuit Point

Band Hall
Canoe Lake First Nation Reserve, SK
Registry Office: Meadow Lake

Canora Circuit Point

Town Office Building
418 Main Street
Canora, SK
Registry Office: Yorkton

Carlyle Circuit Point

Civic Centre
102 Main Street
Carlyle, SK
Registry Office: Estevan

Carnduff Circuit Point

Legion Hall
202 4th Street West
Carnduff, SK
Registry Office: Estevan

Carrot River Circuit Point

Community Hall
1021 1st Avenue
Carrot River, SK
Registry Office: Melfort

Carry the Kettle First Nation (Sintaluta) Circuit Point

Memorial Hall
423 Grand Avenue
Indian Head, SK
Registry Office: Regina

Creighton Circuit Point

Provincial Building
298 1st Street East
Creighton, SK
Registry Office: La Ronge

Cumberland House Circuit Point

Village Office
19 Cumberland Street
Cumberland House, SK
Registry Office: La Ronge

Cut Knife Circuit Point

Curling Rink
204 Otter Street
Cut Knife, SK
Registry Office: North Battleford

D

Deschambault Lake Circuit Point

Band Office
Kistapiskaw Street
Deschambault Lake, SK
Registry Office: La Ronge

E

English River Circuit Point
Band Hall
English River First Nation Reserve, SK
Registry Office: Meadow Lake

Esterhazy Circuit Point
S.N. Boreen Centre
800 4th Avenue
Esterhazy, SK
Registry Office: Yorkton

ESTEVAN PROVINCIAL COURT OFFICE
1016 4TH Street
Estevan, SK S4A 0W5
Ph: 306-637-4528

F

Fond du Lac Circuit Point
Band Office
Gamache Street
Fond du Lac, SK
Registry Office: La Ronge

Fort Qu'Appelle Circuit Point
Provincial Building
177 Segwun Avenue
Fort Qu'Appelle, SK
Registry Office: Regina

H

Hudson Bay Circuit Point
Town Hall
302 Main Street
Hudson Bay, SK
Registry Office: Melfort

Humboldt Circuit Point
Court House
805 8th Avenue
Humboldt, SK
Registry Office: Saskatoon

I

Ile à la Crosse Circuit Point
Provincial Building
P10 Lajeunesse Avenue
Ile à la Crosse, SK
Registry Office: Meadow Lake

Indian Head Circuit Point
Memorial Hall
423 Grand Avenue
Indian Head, SK
Registry Office: Regina

K

Kamsack Circuit Point
Crowstand Centre
241 2nd Street
Kamsack, SK
Registry Office: Yorkton

Kindersley Circuit Point
Masonic Lodge
501 Main Street
Kindersley, SK
Registry Office: Saskatoon

L

La Loche Circuit Point
Provincial Building
La Loche Avenue
La Loche, SK
Registry Office: Meadow Lake

**LLOYDMINSTER PROVINCIAL COURT
OFFICE**
4815 50th Street
Lloydminster, SK S9V 0M8
Ph: 306-825-6420

LA RONGE PROVINCIAL COURT OFFICE
1320 La Ronge Avenue
La Ronge, SK S0J 1L0
Ph: 306-425-4505

Loon Lake Circuit Point
Recreational Centre
First Street South
Loon Lake, SK
Registry Office: Meadow Lake

Leader Circuit Point
Community Centre
402 1st Avenue North
Leader, SK
Registry Office: Swift Current

M

Maple Creek Circuit Point
Legion Hall
218 Maple Street
Maple Creek, SK
Registry Office: Swift Current

Melville Circuit Point
Provincial Building
256 2nd Avenue West
Melville, SK
Registry Office: Yorkton

**MEADOW LAKE PROVINCIAL COURT
OFFICE**
207 3rd Avenue East
Meadow Lake, SK S9X 1E7
Ph: 306-236-7575

Montreal Lake Circuit Point
Band Hall
Montreal Lake First Nation, SK
Registry Office: Prince Albert

MELFORT PROVINCIAL COURT OFFICE
107 Crawford Avenue East
Melfort, SK S0E 1A0
Ph: 306-752-6230

MOOSE JAW PROVINCIAL COURT OFFICE
Room 211, 110 Ominica Street West
Moose Jaw, SK S6H 6V2
Ph: 306-694-3612

Moosomin Circuit Point
Provincial Building
709 Carleton Street
Moosomin, SK
Registry Office: Yorkton

N

Nipawin Circuit Point
McNevin Building
210 1st Street East
Nipawin, SK
Registry Office: Melfort

**NORTH BATTLEFORD PROVINCIAL COURT
OFFICE**
3 Railway Avenue East
North Battleford, SK S9A 2P9
Ph: 306-446-7400

O

Onion Lake First Nation Circuit Point
Onion Lake Court House
Onion Lake 334 First Nations Reserve, SK
Registry Office: Lloydminster

Outlook Circuit Point
Town Hall
400 Saskatchewan Avenue West
Outlook, SK
Registry Office: Saskatoon

P

Pelican Lake First Nation Circuit Point
Civic Centre
303A 1st Street East
Spiritwood, SK
Registry Office: North Battleford

Pinehouse Circuit Point
L.C.A. Hall
Hilltop Avenue
Pinehouse, SK
Registry Office: La Ronge

Pelican Narrows (Cree Court) Circuit Point
L.A.C. Hall
Pelican Narrows, SK
Registry Office: Prince Albert

**PRINCE ALBERT PROVINCIAL COURT
OFFICE**
188 11th Street West
Prince Albert, SK S6V 6G1
Ph: 306-953-2640

Pierceland Circuit Point
Community Hall
First Avenue South
Pierceland, SK
Registry Office: Meadow Lake

Punnichy Circuit Point
Community Hall
609 6th Avenue
Punnichy, SK
Registry Office: Wynyard

R

REGINA PROVINCIAL COURT OFFICE

1815 Smith Street
Regina, SK S4P 2N5
Ph: 306-787-5250

Rose Valley Circuit Point

Community Centre
316 1st Avenue North
Rose Valley, SK
Registry Office: Wynyard

Rosetown Circuit Point

Civic Centre
1005 Main Street
Rosetown, SK
Registry Office: Saskatoon

Rosthern Circuit Point

Lions Hall
2008 6th Street
Rosthern, SK
Registry Office: Saskatoon

S

Sandy Bay (Cree Court) Circuit Point

Gary Morin Memorial Hall
Sandy Bay, SK
Registry Office: Prince Albert

SASKATOON PROVINCIAL COURT OFFICE

220 19TH Street East
Saskatoon, SK S7K 0A2
Ph: 306-933-7052

Shaunavon Circuit Point

Court House
401 3rd Street West
Shaunavon, SK
Registry Office: Swift Current

Shellbrook Circuit Point

Provincial Court Building
105 Railway Avenue
Shellbrook, SK
Registry Office: Prince Albert

Southend Circuit Point

Reindeer Lake Youth Centre
Peter Ballantyne Cree Nation, SK
Registry Office: La Ronge

Southey Circuit Point

Memorial Hall
150 Keats Street
Southey, SK
Registry Office: Regina

Spiritwood Circuit Point

Civic Centre
303A 1st Street East
Spiritwood, SK
Registry Office: North Battleford

St. Walburg Circuit Point

Legion Hall
27 Main Street
St. Walburg, SK
Registry Office: Lloydminster

Stanley Mission Circuit Point

Hamlet Hall
643 Metos Street
Stanley Mission, SK
Registry Office: La Ronge

SWIFT CURRENT PROVINCIAL COURT OFFICE

121 Lorne Street West
Swift Current, SK S9H 0J4
Ph: 306-778-8390

T

Tisdale Circuit Point
Civic Centre
99th Avenue and 100th Street
Tisdale, SK
Registry Office: Melfort

**Turnor Lake (Birch Narrows First Nation)
Circuit Point**
Skating Rink (Upstairs)
10 Young Street
Turnor Lake, SK
Registry Office: Meadow Lake

U

Unity Circuit Point
Legion Hall
312 Main Street
Unity, SK
Registry Office: North Battleford

W

Wadena Circuit Point
Legion Hall
254 Main Street North
Wadena, SK
Registry Office: Wynyard

**Whitefish First Nation (Cree Court) Circuit
Point**
Multi-Purpose Building
Whitefish First Nation Reserve, SK
Registry Office: Prince Albert

Wakaw Circuit Point
Town Office
121 Main Street
Wakaw, SK
Registry Office: Melfort

Wollaston Lake Circuit Point
L.C.A. Hall
Wollaston Lake, SK
Registry Office: La Ronge

Watrous Circuit Point
Provincial Building
403 Main Street
Watrous, SK
Registry Office: Saskatoon

WYNYARD PROVINCIAL COURT OFFICE
Box 1449 - 410 Avenue C East
Wynyard, SK S0A 4T0
Ph: 306-554-5521

Weyburn Circuit Point
301 Prairie Avenue
Weyburn, SK S4H 0L4
Ph: 306-848-2357

Y

YORKTON PROVINCIAL COURT OFFICE

120 Smith Street East

Yorkton, SK S3N 3V3

Ph: 306-786-1400

1. Subsequent to the period of this report, the Blaine Lake Circuit Point address changed.